

**RPE806Hu01 50µg**

**Recombinant Glutamate Receptor, Ionotropic, N-Methyl-D-Aspartate 2A (GRIN2A)**

**Organism Species: *Homo sapiens (Human)***

***Instruction manual***

FOR IN VITRO USE AND RESEARCH USE ONLY  
NOT FOR USE IN CLINICAL DIAGNOSTIC PROCEDURES

---

12th Edition (Revised in Aug, 2016)

**[ PROPERTIES ]**

**Source:** Prokaryotic expression

**Host:** *E.coli*

**Residues:** Pro31~Ala555

**Tags:** N-terminal His Tag

**Subcellular Location:** Membrane

**Purity:** > 80%

**Traits:** Freeze-dried powder

**Buffer formulation:** 20mM Tris, 150mM NaCl, pH8.0, containing 1mM EDTA, 1mM DTT, 0.01% SKL, 5% Trehalose and Proclin300.

**Original Concentration:** 200µg/mL

**Applications:** Positive Control; Immunogen; SDS-PAGE; WB.

(May be suitable for use in other assays to be determined by the end user.)

**Predicted isoelectric point:** 5.3

**Predicted Molecular Mass:** 62.5kDa

**Accurate Molecular Mass:** 63kDa as determined by SDS-PAGE reducing conditions.

**[ USAGE ]**

Reconstitute in 20mM Tris, 150mM NaCl (pH8.0) to a concentration of 0.1-1.0 mg/mL. Do not vortex.

**[ STORAGE AND STABILITY ]**

**Storage:** Avoid repeated freeze/thaw cycles.

Store at 2-8°C for one month.

Aliquot and store at -80°C for 12 months.

**Stability Test:** The thermal stability is described by the loss rate. The loss rate was determined by accelerated thermal degradation test, that is, incubate the protein at 37°C for 48h, and no obvious degradation and precipitation were observed. The loss rate is less than 5% within the expiration date under appropriate storage condition.

**[ SEQUENCE ]**

```

                                PPALNIAVML  GSHSDVTERE
LRTLWGPEQA  AGLPLDVNVV  ALLMNRTDPK  SLITHVCDLM  SGARIHGLVF
GDDTDQEAVA  QMLDFISSHT  FVPILGIHGG  ASMIMADKDP  TSTFFQFGAS
IQQATVMLK   IMQDYDWHVF  SLVTTIFPGY  REFISFVKTT  VDNSFVGWDM
QNVITLDTSF  EDAKTQVQLK  KIHSSVILLY  CSKDEAVLIL  SEARSLGLTG
YDFFWIVPSL  VSGNTELIPK  EFPSGLISVS  YDDWDYSLEA  RVRDGIGILT
TAASSMLEKF  SYIPEAKASC  YGQMERPEVP  MHTLHPFMVN  VTWDGKDLSF
TEEGYQVHPR  LVVIVLNKDR  EWEKVGKWEN  HTLSLRHAVW  PRYKSFSDCE
PDDNHLSIIVT  LEEAPFVIVE  DIDPLTETCV  RNTVPCRKFV  KINNSTNEGM
NVKKCKKGFC  IDILKKLSRT  VKFTYDLYLV  TNGKHGKKVN  NVWNGMIGEY
VYQRAVMAVG  SLTINEERSE  VVDFSVPFVE  TGISVMVSRS  NGTVSPSAFL
EPFSA
    
```

**[ IDENTIFICATION ]**

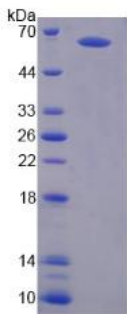


Figure. SDS-PAGE

**[ IMPORTANT NOTE ]**

The kit is designed for in vitro and research use only, we will not be responsible for any issue if the kit was used in clinical diagnostic or any other procedures.