

RPC810Hu01 1mg
Recombinant Three Prime Repair Exonuclease 1 (TREX1)
Organism Species: Homo sapiens (Human)
Instruction manual

FOR IN VITRO USE AND RESEARCH USE ONLY
NOT FOR USE IN CLINICAL DIAGNOSTIC PROCEDURES

12th Edition (Revised in Aug, 2016)

[**PROPERTIES**]

Source: Prokaryotic expression.

Host: *E. coli*

Residues: Arg6~Glu369

Tags: N-terminal His-Tag

Tissue Specificity: Thymus, Spleen, Liver, Brain.

Subcellular Location: Nucleus. Cytoplasm. Endoplasmic Reticulum Membrane; Peripheral Membrane Protein.

Purity: >95%

Traits: Freeze-dried powder

Buffer formulation: 20mM Tris, 150mM NaCl, pH8.0, containing 1mM EDTA, 1mM DTT, 0.01% sarcosyl, 5%Trehalose and Proclin300.

Original Concentration: 200µg/mL

Applications: Positive Control; Immunogen; SDS-PAGE; WB.

(May be suitable for use in other assays to be determined by the end user.)

Predicted isoelectric point: 8.8

Predicted Molecular Mass: 42.2kDa

Accurate Molecular Mass: 44kDa as determined by SDS-PAGE reducing conditions.

[**USAGE**]

Reconstitute in 20mM Tris, 150mM NaCl (pH8.0) to a concentration of 0.1-1.0 mg/mL. Do not vortex.

[**STORAGE AND STABILITY**]

Storage: Avoid repeated freeze/thaw cycles.

Store at 2-8°C for one month.

Aliquot and store at -80°C for 12 months.

Stability Test: The thermal stability is described by the loss rate. The loss rate was determined by accelerated thermal degradation test, that is, incubate the protein at 37°C for 48h, and no obvious degradation and precipitation were observed. The loss rate is less than 5% within the expiration date under appropriate storage condition.

[SEQUENCE]

RRQGR	IVQGRPEMCF	CPPPTPLPPL	RILTLGHTHP	TPCSSPGSAA
GTYPMTGSQA	LPPGPMQTLI	FFDMEATGLP	FSQPKVTELC	LLAVHRCALC
SPPTSQGPPP	TVPPPPRVVD	KLSLCVAPGK	ACSPAASEIT	GLSTAVLAAH
GRQCFDDNLA	NLLLAFLRRQ	PQPWCLVAHN	GDRYDFPLLQ	AELAMLGLTS
ALDGAFCVDS	ITALKALERA	SSPSEHGPRK	SYSLGSIYTR	LYGQSPDSDH
TAEGDVLALL	SICQWRPQAL	LRWVDAHARP	FGTIRPMYGV	TASARTKPRP
SAVTTTAAHLA	TTRNTSPSLG	ESRGTKDLPP	VKDPGALSRE	GLLAPLGLLA
ILTLAVATLY	GLSLATPGE			

[IDENTIFICATION]

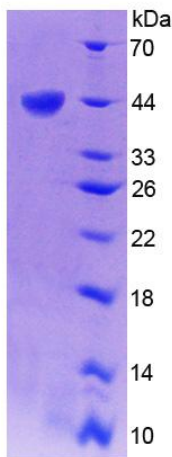


Figure 1. SDS-PAGE