

**RPB972Ra01 100ug**

**Recombinant Pigment Epithelium Derived Factor (PEDF)**

**Organism Species: Rattus norvegicus (Rat)**

***Instruction manual***

FOR IN VITRO USE AND RESEARCH USE ONLY

NOT FOR USE IN CLINICAL DIAGNOSTIC PROCEDURES

10th Edition (Revised in Jan, 2014)

## **[ PROPERTIES ]**

**Residues:** Gln20~Thr418

**Tags:** Two N-terminal Tags, His-tag and SUMO-tag

**Accession:** Q80ZA3

**Host:** *E. coli*

**Purity:** >90%

**Endotoxin Level:** <1.0EU per 1µg

(determined by the LAL method).

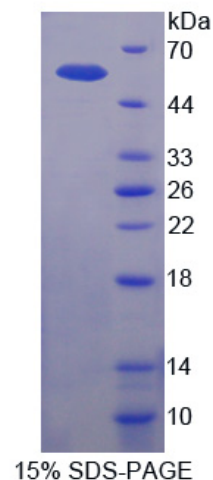
**Formulation:** Supplied as lyophilized form in 20mM Tris, 150mM NaCl, pH8.0, containing 1mM EDTA, 1mM DTT, 0.01% sarcosyl, 5% trehalose, and preservative.

**Predicted isoelectric point:** 6.0

**Predicted Molecular Mass:** 58.2kDa

**Applications:** SDS-PAGE; WB; ELISA; IP.

(May be suitable for use in other assays to be determined by the end user.)



## **[ USAGE ]**

Reconstitute in sterile ddH<sub>2</sub>O.

## **[ STORAGE AND STABILITY ]**

**Storage: Avoid repeated freeze/thaw cycles.**

Store at 2-8°C for one month.

Aliquot and store at -80°C for 12 months.

**Stability Test:** The thermal stability is described by the loss rate of the target protein. The loss rate was determined by accelerated thermal degradation test, that is, incubate the protein at 37°C for 48h, and no obvious degradation and precipitation were observed. (Referring from China Biological Products Standard, which was calculated by the Arrhenius equation.) The loss of this protein is less than 5% within the expiration date under appropriate storage condition.

## **[ SEQUENCES ]**

The sequence of the target protein is listed below.

Q NVPDSSQDSP APDSTGEPVV EEDDPFFKAP VNKLAHAVSN FGYDLYRLRS GAVSTGNILL  
SPLSVATALS ALSLGAEQRT ESVIHRALYY DLINNPDIHS TYKELLASVT APEKNFKSAS  
RIVFERKLRV KSSFVAPLEK SYGTRPRILT GNPRIDLQEI NNWVQAQMKG KIARSTREMP  
SALSILLGV AYFKGQWATK FDSRKTTLQD FHLDEDRTVR VPMMSDPKAI LRYGLDSDLN  
CKIAQLPLTG SMSIIFFLPL TVTQNLTMIE ESLTSEFVHD IDRELKTIQA VLTVPKLLKS  
YEGDVTNSLQ DMKLQSLFES PDFSKITGKP VKLTQVEHRA AFEWNEEGAG TSSNPDLQPV  
RLTFPLDYHL NRPFIFVLRD TDTGALLFIG RILDPSST