

RPB389Hu01 50µg

Recombinant Von Willebrand Factor A Domain Containing Protein 2 (vWA2)

Organism Species: Homo sapiens (Human)

Instruction manual

FOR IN VITRO USE AND RESEARCH USE ONLY

NOT FOR USE IN CLINICAL DIAGNOSTIC PROCEDURES

11th Edition (Revised in May, 2016)

[PROPERTIES]

Source: Prokaryotic expression.

Host: *E. coli*

Residues: Ser457~Gly708

Tags: N-terminal His-Tag

Tissue Specificity: Brain, Placenta.

Subcellular Location: Secreted.

Purity: >98%

Endotoxin Level: <1.0EU per 1µg (determined by the LAL method).

Traits: Freeze-dried powder

Buffer formulation: 20mM Tris, 150mM NaCl, pH8.0, containing 1mM EDTA, 1mM DTT, 0.01% sarcosyl, 5%Trehalose and Proclin300.

Original Concentration: 200ug/mL

Applications: SDS-PAGE; WB; ELISA; IP; CoIP; Reporter Assays; Purification; Amine Reactive Labeling.

(May be suitable for use in other assays to be determined by the end user.)

Predicted isoelectric point: 5.3

Predicted Molecular Mass: 30.5kDa

Accurate Molecular Mass: 31kDa as determined by SDS-PAGE reducing conditions.

[USAGE]

Reconstitute in 20mM Tris, 150mM NaCl (pH8.0) to a concentration of 0.1-1.0 mg/mL. Do not vortex.

[STORAGE AND STABILITY]

Storage: Avoid repeated freeze/thaw cycles.

Store at 2-8°C for one month.

Aliquot and store at -80°C for 12 months.

Stability Test: The thermal stability is described by the loss rate. The loss rate was determined by accelerated thermal degradation test, that is, incubate the protein at 37°C for 48h, and no obvious degradation and precipitation were observed. The loss rate is less than 5% within the expiration date under appropriate storage condition.

[SEQUENCE]

```
SEDE VAGPARHARA RELLLLGVGS EAVRAELEEI TGSPKHMVY
SDPQDLFNQI PELQGKLC SR QRP GCRTQAL DLV FMLDTSA SVGPENFAQM
QSFVRSALQ FEVNP DVTQV GLVVYGSQVQ TAFGLDTKPT RAAMLRAISQ
APYLGGV GSA GTALLHIYDK VMTVQRGARP GVPKAVVLT GGRGAEDAAV
PAQKL RNNGI SVLVVGVGPV LSEGLRRLAG PRDSL IHVAA YADLRYHQDV
LIEWL CGG
```

[IDENTIFICATION]

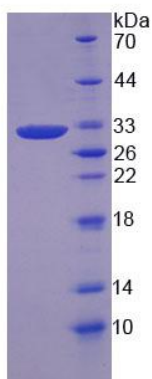


Figure 1. SDS-PAGE