

**RPB120Hu01 100µg**

**Recombinant Arginase (ARG)**

**Organism Species: *Homo sapiens* (Human)**

***Instruction manual***

FOR RESEARCH USE ONLY

NOT FOR USE IN CLINICAL DIAGNOSTIC PROCEDURES

---

12th Edition (Revised in Aug, 2016)

## [ **PROPERTIES** ]

**Source:** Prokaryotic expression

**Host:** *E.coli*

**Residues:** Met1~Lys322

**Tags:** N-terminal His Tag

**Subcellular Location:** Cytoplasm

**Purity:** > 97%

**Traits:** Freeze-dried powder

**Buffer formulation:** 20mM Tris, 150mM NaCl, pH8.0, containing 0.01% SKL, 5% Trehalose.

**Original Concentration:** 200µg/mL

**Applications:** Positive Control; Immunogen; SDS-PAGE; WB.

(May be suitable for use in other assays to be determined by the end user.)

**Predicted isoelectric point:** 6.7

**Predicted Molecular Mass:** 36.9kDa

**Accurate Molecular Mass:** 37kDa as determined by SDS-PAGE reducing conditions.

## [ **USAGE** ]

Reconstitute in 20mM Tris, 150mM NaCl (pH8.0) to a concentration of 0.1-1.0 mg/mL. Do not vortex.

## [ **STORAGE AND STABILITY** ]

**Storage:** Avoid repeated freeze/thaw cycles.

Store at 2-8°C for one month.

Aliquot and store at -80°C for 12 months.

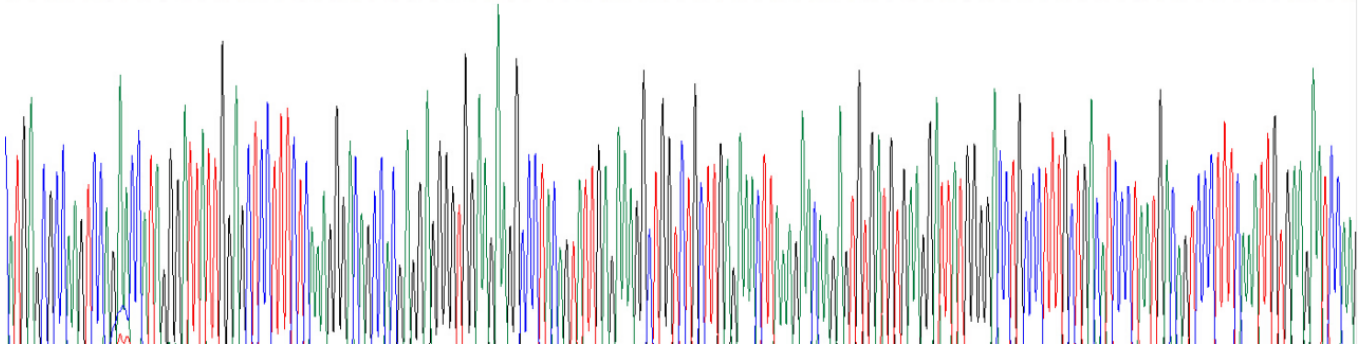
**Stability Test:** The thermal stability is described by the loss rate. The loss rate was determined by accelerated thermal degradation test, that is, incubate the protein at 37°C for 48h, and no obvious degradation and precipitation were observed. The loss rate is less than 5% within the expiration date under appropriate storage condition.

## [ **SEQUENCE** ]

```
MSAKSRTIGI IGAPFSKGQP RGGVEEGPTV LRKAGLLEKL KEQECDVKDY
GDLPFADIPN DSPFQIVKNP RSVGKASEQL AGKVAEVKKN GRISLVLGGD
HSLAIGSISG HARVHPDLGV IWVDAHTDIN TPLTTTSGNL HGQPVSFLLK
ELKGKIPDVP GFSWVTPCIS AKDIVYIGLR DVDPGEHYIL KTLGIKYFSM
TEVDRLGIGK VMEETLSYLL GRKKRPIHLS FDVDGLDPSF TPATGTPVVG
GLTYREGLYI TEEIYKTGLL SGLDIMEVNP SLGKTPEEVT RTVNTAVAIT
LACFGLAREG NHKPIDYLNP PK
```

**[ IDENTIFICATION ]**

```
ATGAGCGCGGAGTCGAGACCAAGGGATATTGGAGCTCCCTTCTCAAGGGACA GCGAGGGAGGGGTGGAGAGGGCCCTACAGTATTGAGAAAGGCTGGTCTCTTGAGAACTTAAAGACAGAGGTGTGATGTGAGGATATGGGGACTGCGCTTTGCTGAGATCCCTAATGACAGTCCCTTTCAATTGTGAGGATCCAAH
H S A K S R T I G I I G A P P S K G Q P R G G V E E G P T V L R K A G L L E K L K E Q E C D V K D Y G D L P P A D I P H D S P P Q I V E N P R
```



**Figure. Gene Sequencing (Extract)**

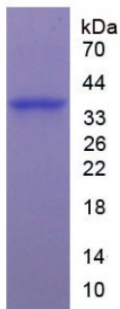


Figure. SDS-PAGE

**[ IMPORTANT NOTE ]**

The kit is designed for research use only, we will not be responsible for any issue if the kit was used in clinical diagnostic or any other procedures.