

RPA560Mu02 5µg
Recombinant Epidermal Growth Factor (EGF)
Organism Species: Mus musculus (Mouse)
Instruction manual

FOR IN VITRO USE AND RESEARCH USE ONLY
NOT FOR USE IN CLINICAL DIAGNOSTIC PROCEDURES

12th Edition (Revised in Aug, 2016)

[**PROPERTIES**]

Source: Prokaryotic expression.

Host: *E. coli*

Residues: Asp362~Ala483

Tags: Two N-terminal Tags, His-tag and SUMO-tag

Tissue Specificity: Kidney, Salivary Gland.

Subcellular Location: Membrane; Single-pass Type I Membrane Protein.

Purity: >95%

Traits: Freeze-dried powder

Buffer formulation: 20mM Tris, 150mM NaCl, pH8.0, containing 1mM EDTA, 1mM DTT, 0.01% sarcosyl, 5%Trehalose and Proclin300.

Original Concentration: 200µg/mL

Applications: Positive Control; Immunogen; SDS-PAGE; WB.

(May be suitable for use in other assays to be determined by the end user.)

Predicted isoelectric point: 5.4

Predicted Molecular Mass: 26.4kDa

Accurate Molecular Mass: 35kDa as determined by SDS-PAGE reducing conditions.

Phenomenon explanation:

The possible reasons that the actual band size differs from the predicted are as follows:

1. Splice variants: Alternative splicing may create different sized proteins from the same gene.
2. Relative charge: The composition of amino acids may affects the charge of the protein.
3. Post-translational modification: Phosphorylation, glycosylation, methylation etc.
4. Post-translation cleavage: Many proteins are synthesized as pro-proteins, and then cleaved to give the active form.
5. Polymerization of the target protein: Dimerization, multimerization etc.

[**USAGE**]

Reconstitute in 20mM Tris, 150mM NaCl (pH8.0) to a concentration of 0.1-1.0 mg/mL. Do not vortex.

[STORAGE AND STABILITY]

Storage: Avoid repeated freeze/thaw cycles.

Store at 2-8°C for one month.

Aliquot and store at -80°C for 12 months.

Stability Test: The thermal stability is described by the loss rate. The loss rate was determined by accelerated thermal degradation test, that is, incubate the protein at 37°C for 48h, and no obvious degradation and precipitation were observed. The loss rate is less than 5% within the expiration date under appropriate storage condition.

[SEQUENCE]

```
DVNECATQN HGCTLGCENT PGSYHCTCPT GFVLLPDGKQ  
CHELVSCP GN VSKCSHGCVL TSDGPRCICP AGSVLGRDGK TCTGCSSPDN  
GGCSQICLPL RPGSWECDCF PGYDLQSDRK SCA
```

[IDENTIFICATION]

IGTGTGATGATGTGGCCACTGAGATCAGGGCTGTACTCTTGGGTGTGAAAACCCCTGGATCTATATCAGTCGACATGCCCGACAGATTTTCTCTGCTTCTGTGTGGAAAGAAATGTACGAACTTCTTCTGCGCAGGAAAGTATGAAAGTGAATCATGGCTGTGTCTTCAATGAGATGAGATGGTCCCGGTGCACTCTCTGC
D V N E C A T Q N H G C T L G C E N T P G S Y H C T C P T G F V L L P D G K Q C H E L V S C P G H V S K C S H G C V L T S D G P R C I C P A

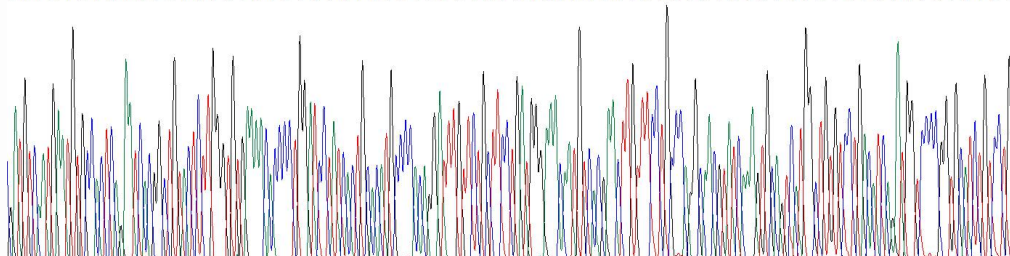


Figure 1. Gene Sequencing (Extract)

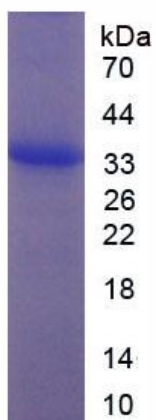


Figure 2. SDS-PAGE