

EPA056Ca61 100ug

Eukaryotic Interleukin 10 (IL10)

Organism Species: Canis familiaris; Canine (Dog)

Instruction manual

FOR IN VITRO USE AND RESEARCH USE ONLY

NOT FOR USE IN CLINICAL DIAGNOSTIC PROCEDURES

11th Edition (Revised in May, 2016)

[PROPERTIES]

Source: Eukaryotic expression.

Host: 293F cell

Residues: Ser20~Ile181

Tags: N-terminal His Tag

Homology: Human 80%, Mouse 72%, rat 74%

Subcellular Location: Secreted.

Purity: >95%

Endotoxin Level: <1.0EU per 1µg (determined by the LAL method).

Traits: Freeze-dried powder

Buffer Formulation: 20mM Tris, 150mM NaCl, pH8.0, containing 1mM EDTA, 1mM DTT, 5%Trehalose and Proclin300.

Original Concentration: 200ug/mL

Predicted isoelectric point: 9.0

Predicted Molecular Mass: 20.7kDa

Accurate Molecular Mass: 20kDa as determined by SDS-PAGE reducing conditions.

Applications: SDS-PAGE; WB; ELISA; IP; CoIP; EMSA; Reporter Assays; Purification; Amine Reactive Labeling.

(May be suitable for use in other assays to be determined by the end user.)

[USAGE]

Reconstitute in 20mM Tris, 150mM NaCl (pH8.0) to a concentration of 0.1-1.0 mg/mL. Do not vortex

[STORAGE AND STABILITY]

Storage: Avoid repeated freeze/thaw cycles.

Store at 2-8°C for one month.

Aliquot and store at -80°C for 12 months.

Stability Test: The thermal stability is described by the loss rate. The loss rate was determined by accelerated thermal degradation test, that is, incubate the protein at 37°C for 48h, and no obvious degradation and precipitation were observed. The loss rate is less than 5% within the expiration date under appropriate storage condition.

[SEQUENCE]

```

S  RHQSTLLEDD  CTHFPASLPH  MLRELRAAFG
RVKIFFQMKD  KLDNILLTGS  LLEDFKSYLG  CQALSEMIQF  YLEEVMRAE
NHDPDIKNHV  NSLGEKCLKL  RLRLRLRRC  H  RFLPCENKSK  AVEQVKSASF
KLQEKGVYKA  MSEFDIFINY  IETYMTMRM  K  I
    
```

[IDENTIFICATION]

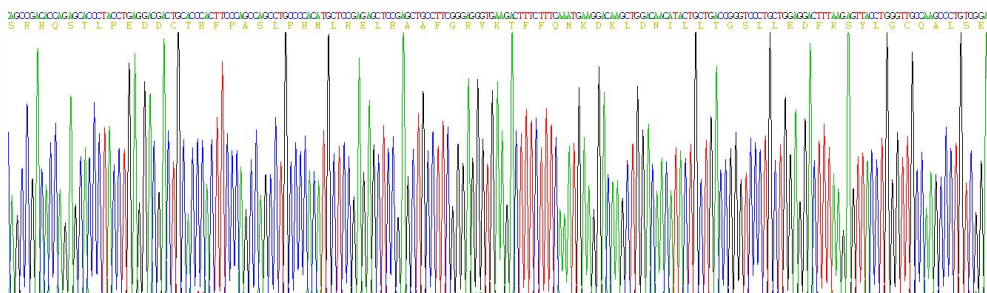


Figure 1. Gene Sequencing (extract)

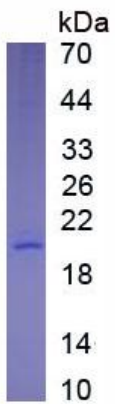


Figure 2. SDS-PAGE