

**CPB124Ge11 100µg****BSA Conjugated BSA Conjugated Opiorphin (OPI)*****Instruction manual***

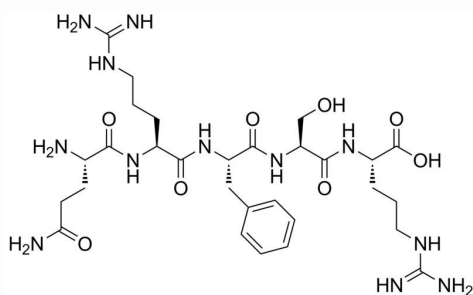
FOR IN VITRO USE AND RESEARCH USE ONLY  
NOT FOR USE IN CLINICAL DIAGNOSTIC PROCEDURES

---

---

11th Edition (Revised in May, 2016)

## **[ PROPERTIES ]**

**Source:** Protein Conjugation**Original Structure:****Original Chemical Formula:** C<sub>29</sub>H<sub>48</sub>N<sub>12</sub>O<sub>8</sub>**Original Mol. Mass:** 692.8Da**Purity:** >90%**Traits:** Freeze-dried powder.**Buffer Formulation:** PBS, pH7.4.**Applications:** Immunogen; Coating Antigen; ELISA; SDS-PAGE.

## **[ USAGE ]**

Reconstitute in PBS (pH7.4) to a concentration of 0.1-1.0 mg/mL. Do not vortex.

## **[ STORAGE AND STABILITY ]**

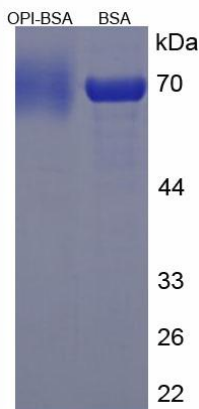
**Storage:** Avoid repeated freeze/thaw cycles.

Store at 2-8°C for one month.

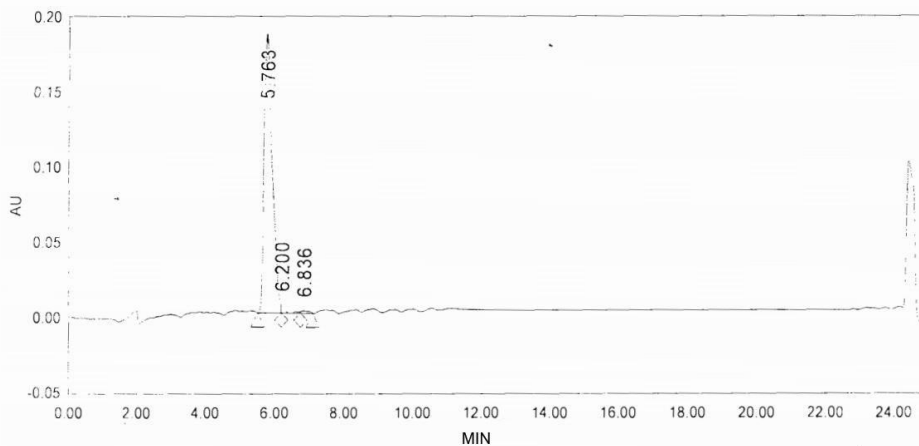
Aliquot and store at -80°C for 12 months.

**Stability Test:** The thermal stability is described by the loss rate. The loss rate was determined by accelerated thermal degradation test, that is, incubate the protein at 37°C for 48h, and no obvious degradation and precipitation were observed. The loss rate is less than 5% within the expiration date under appropriate storage condition.

## [ IDENTIFICATION ]



**Figure 1. SDS-PAGE**



**Figure 2. HPLC of the OPI**

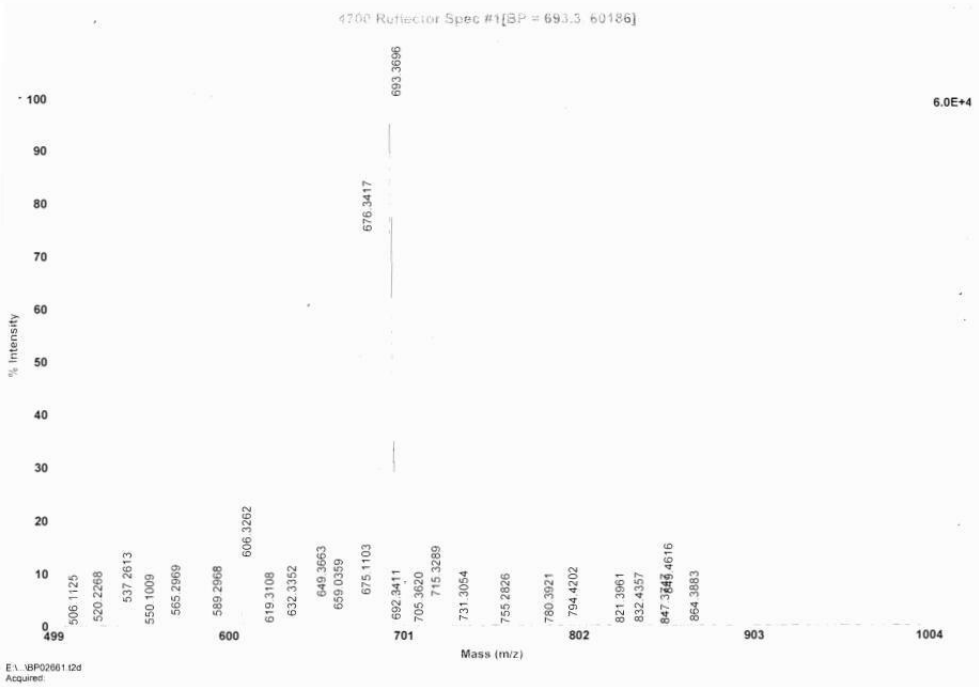


Figure 3. MASS Spectrometry of the OPI