

APA079Hu01 10µg

Active Interleukin 6 (IL6)

Organism Species: *Homo sapiens (Human)*

Instruction manual

FOR RESEARCH USE ONLY

NOT FOR USE IN CLINICAL DIAGNOSTIC PROCEDURES

1st Edition (Apr, 2016)

[PROPERTIES]

Source: Prokaryotic expression.

Host: *E. coli*

Residues: Pro29~Met212

Tags: N-terminal GST Tag

Purity: >95%

Buffer Formulation: 20mM Tris, 150mM NaCl, pH8.0, containing 5% trehalose.

Applications: Cell culture; Activity Assays; In vivo assays.

(May be suitable for use in other assays to be determined by the end user.)

Predicted isoelectric point: 6.0

Predicted Molecular Mass: 46.9kDa

Accurate Molecular Mass: 47kDa as determined by SDS-PAGE reducing conditions.

[USAGE]

Reconstitute in 20mM Tris, 150mM NaCl (pH8.0) to a concentration of 0.1-1.0 mg/mL. Do not vortex.

[STORAGE AND STABILITY]

Storage: Avoid repeated freeze/thaw cycles.

Store at 2-8°C for one month.

Aliquot and store at -80°C for 12 months.

Stability Test: The thermal stability is described by the loss rate. The loss rate was determined by accelerated thermal degradation test, that is, incubate the protein at 37°C for 48h, and no obvious degradation and precipitation were observed. The loss rate is less than 5% within the expiration date under appropriate storage condition.

[SEQUENCE]

PV PPGEDSKDVA APHRQPLTSS

ERIDKQIRYI LDGISALRKE TCNKSNCES SKEALAENNL NLPKMAEKDG
 CFQSGFNEET CLVKIITGLL EFEVYLEYLQ NRFESSEEQA RAVQMSTKVL
 IQFLQKKAKN LDAITTPDPT TNASLLTKLQ AQNQWLQDMT THLILRSFKE
 FLQSSLRALR QM

[ACTIVITY]

Interleukin-6 (IL-6), a pro-inflammatory cytokine and an anti-inflammatory myokine, plays important roles in the acute phase reaction, inflammation, hematopoiesis, bone metabolism, and cancer progression. It has been reported that IL-6 significantly increased the MMP-10 protein level in the human lung cancer A549 cells through the JAK/STAT signaling pathway. Briefly, A549 cells were seeded into 6-well cell culture clusters and allowed to grow to 50-70% confluence, then different concentrations of IL-6 was added. After incubated for 24h, the protein levels of MMP-10 in the cell supernatant were determined by Western blot.

MMP-10 protein level significantly increased in A549 cells due to the stimulation of IL-6, the data was shown in Figure 1.

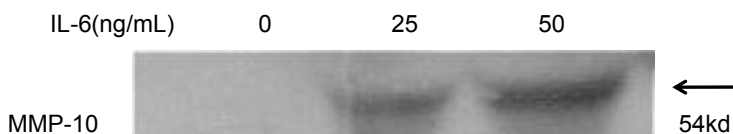


Figure 1. Effect of Human IL-6 on MMP-10 protein levels in A549 cells.

[IDENTIFICATION]

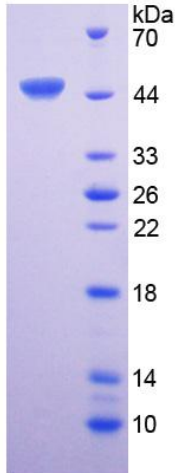


Figure 2. SDS-PAGE

Sample: Active recombinant IL6, Human

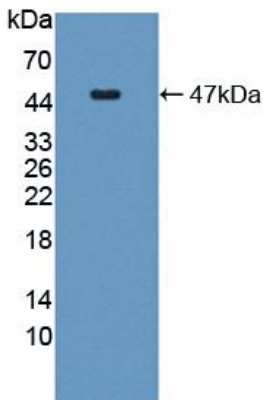


Figure 3. Western Blot

Sample: Recombinant IL6, Human;

Antibody: Rabbit Anti-Human IL6 Ab (PAA079Hu01)

[IMPORTANT NOTE]

The kit is designed for in vitro and research use only, we will not be responsible for any issue if the kit was used in clinical diagnostic or any other procedures.