

---

Product Manual

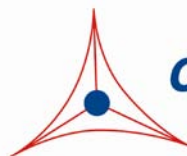
# OxiSelect™ Comet Assay Kit (3-Well Slides)

Catalog Number

STA-351	75 assays
STA-351-5	5 x 75 assays

**FOR RESEARCH USE ONLY**  
Not for use in diagnostic procedures

---



**CELL BIOLABS, INC.**  
*Creating Solutions for Life Science Research*

## **Introduction**

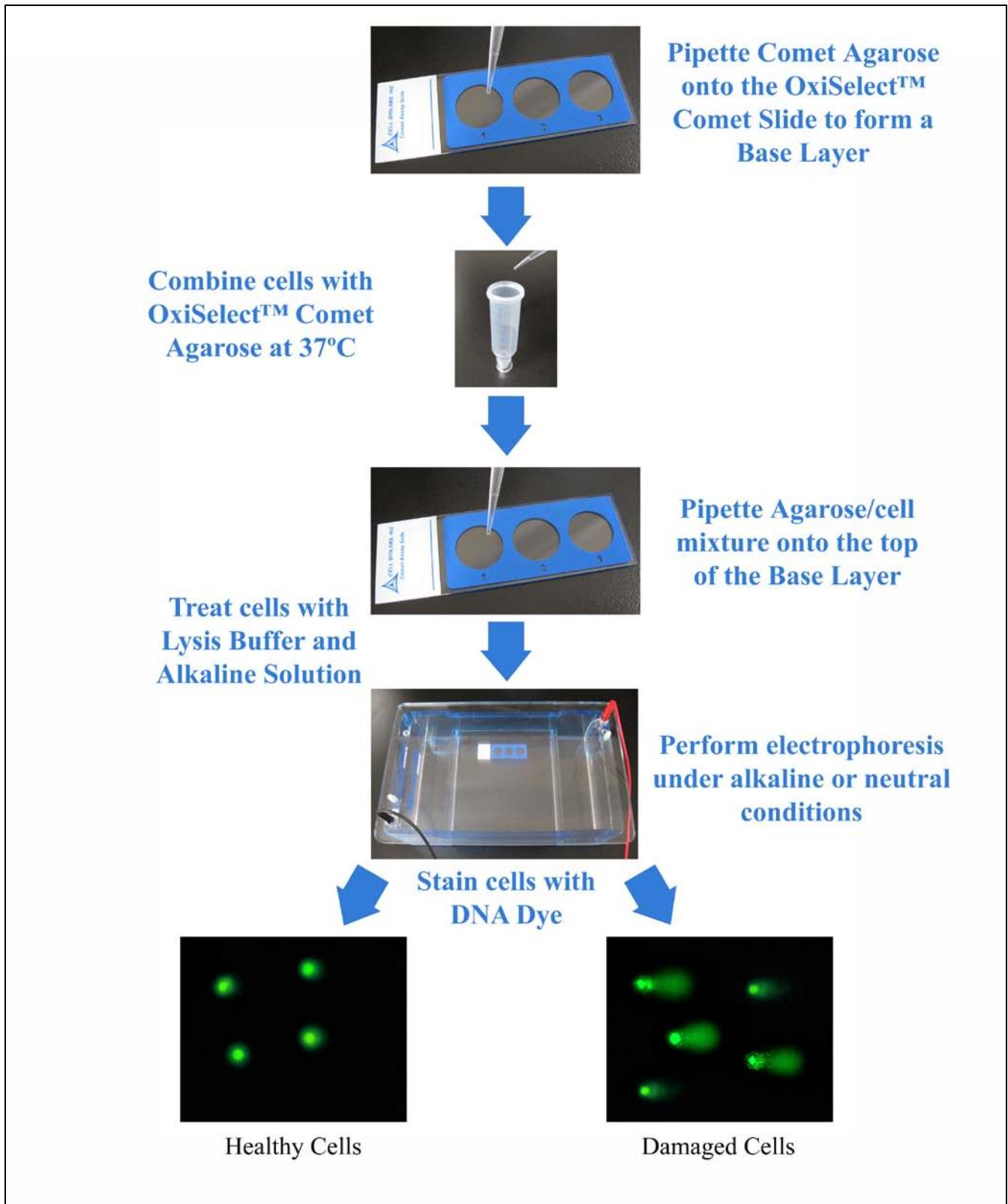
DNA damage, due to environmental factors and normal metabolic processes inside the cell, occurs at a rate of 1,000 to 1,000,000 molecular lesions per cell per day. While this counts for only a small part of the human genome's approximately 6 billion bases (3 billion base pairs), unrepaired lesions to critical genes can impede a cell's ability to carry out its function and appreciably increase the likelihood of cancer.

The comet assay, or single cell gel electrophoresis assay (SCGE), is a common technique for measurement of DNA damage in individual cells. Under an electrophoretic field, damaged cellular DNA (containing fragments and strand breaks) is separated from intact DNA, yielding a classic “comet tail” shape under the microscope. Extent of DNA damage is usually visually estimated by comet tail measurement; however, image analysis software is also available for measuring various parameters.

The OxiSelect™ Comet Assay is a fast and sensitive kit for the measurement of cellular DNA damage. Each kit provides sufficient reagents to perform up to 75 assays.

## **Assay Principle**

The Cell Biolabs OxiSelect™ Comet Assay is a single cell gel electrophoresis assay (SCGE) for simple evaluation of cellular DNA damage. First, individual cells are mixed with molten agarose before application to the OxiSelect™ Comet Slide. These embedded cells are then treated with a lysis buffer and alkaline solution, which relaxes and denatures the DNA. Finally, the samples are electrophoresed in a horizontal chamber to separate intact DNA from damaged fragments. Following electrophoresis, the samples are dried, stained with a DNA dye, and visualized by epifluorescence microscopy. Under these conditions, the damaged DNA (containing cleavage and strand breaks) will migrate further than intact DNA and produce a “comet tail” shape (see Figure 1). Each kit provides sufficient reagents to perform up to 75 assays.



**Figure 1: Comet Assay Principle**

## **Related Products**

1. STA-320: OxiSelect™ Oxidative DNA Damage ELISA Kit (8-OHdG Quantitation)
2. STA-321: OxiSelect™ DNA Double-Strand Break (DSB) Staining Kit
3. STA-324: OxiSelect™ Oxidative DNA Damage Quantitation Kit (AP sites)
4. STA-325: OxiSelect™ Oxidative RNA Damage ELISA Kit (8-OHG Quantitation)
5. STA-350: OxiSelect™ Comet Assay Kit (3-Well Slides), 15 Assays
6. STA-352: OxiSelect™ Comet Assay Slides (3-Well), 5 Slides
7. STA-353: OxiSelect™ Comet Assay Slides (3-Well), 25 Slides
8. STA-354: OxiSelect™ Comet Assay Control Cells
9. STA-355: OxiSelect™ 96-Well Comet Assay Kit
10. STA-356: OxiSelect™ 96-Well Comet Assay Slide

## **Kit Components**

1. OxiSelect™ 3-Well Comet Slides (Part No. STA-353): 25 slides.
2. OxiSelect™ Comet Agarose (Part No. 235002): One sterile 15 mL bottle.
3. Vista Green DNA Dye, 10000X (Part No. 235003): One 5 µL vial.
4. EDTA Solution, 500 mM (Part No. 235102): One 250 mL bottle.
5. 10X Lysis Solution (Part No. 235103): One 100 mL bottle.

## **Materials Not Supplied**

1. NaCl powder
2. NaOH pellets
3. 10 N NaOH for pH adjustment
4. DMSO (optional)
5. 70% Ethanol
6. TE Buffer (10 mM Tris, pH 7.5, 1 mM EDTA)
7. PBS (without Mg<sup>2+</sup> and Ca<sup>2+</sup>)
8. EDTA (disodium salt)
9. DI H<sub>2</sub>O
10. 37°C and boiling water baths
11. Horizontal electrophoresis chamber
12. Adjustable single channel micropipettes with disposable tips
13. Epifluorescence microscope with FITC filter

## Storage

Upon receipt, store the Vista Green DNA Dye at -20°C. Store all other kit components at room temperature.

## Preparation of Reagents

- OxiSelect™ Comet Agarose: Heat the Comet Agarose bottle at 90-95°C in a water bath for 20 minutes, or until agarose liquefies. Transfer the bottle to a 37°C water bath for 20 minutes and maintain until needed.
- Vista Green DNA Dye: Prepare a 1X Vista Green DNA Staining Solution by diluting the provided stock 1:10000 in TE Buffer (10 mM Tris, pH 7.5, 1 mM EDTA). The solution can be stored at 4°C for up to 3 weeks, protected from light.
- Lysis Buffer: To prepare 100 mL of 1X Lysis Buffer

NaCl	14.6 g
EDTA Solution (provided)	20.0 mL
10X Lysis Solution (provided)	10.0 mL
DMSO	10.0 mL (optional for heme containing samples)
DI H <sub>2</sub> O	Adjust volume to 90 mL

Mix thoroughly to dissolve NaCl. Slowly adjust the Lysis Buffer to pH 10.0 with 10 N NaOH, then QS to 100 mL with DI H<sub>2</sub>O. Chill Lysis Buffer to 4 °C before use.

*Note: Buffer will appear cloudy at room temperature, but will clear at 4°C. pH will also remain ~10.0.*

- Alkaline Solution: To prepare 100 mL of Alkaline Solution

NaOH	1.2 g
EDTA Solution (provided)	0.2 mL
DI H <sub>2</sub> O	Adjust volume to 100 mL

Mix thoroughly to dissolve NaOH. Chill Alkaline Solution to 4°C before use.

- Electrophoresis Running Solution: Choose the appropriate electrophoresis solution based on the desired running conditions and assay sensitivity. TBE is preferred for analysis of apoptosis and enables use of the tail length, rather than the tail moment, for data analysis. TBE electrophoresis will detect single-stranded and double-stranded DNA breaks, and may detect a few AP sites. Alkaline electrophoresis is more sensitive and will detect smaller amounts of DNA damage. Alkaline electrophoresis will detect single-stranded and double-stranded DNA breaks, the majority of AP sites, and alkali labile DNA adducts.

To prepare 1 L of Electrophoresis Solution

### **1. TBE Electrophoresis Solution**

Tris Base	10.8 g
Boric Acid	5.5 g

EDTA (disodium salt)	0.93 g
DI H <sub>2</sub> O	Adjust volume to 1 L

Mix thoroughly to dissolve solids. Chill TBE Running Solution to 4°C before use.

**OR 2. Alkaline Electrophoresis Solution (300 mM NaOH, pH >13, 1 mM EDTA)**

NaOH	12.0 g
EDTA Solution (provided)	2.0 mL
DI H <sub>2</sub> O	Adjust volume to 1 L

Mix thoroughly to dissolve NaOH. Chill Alkaline Running Solution to 4°C before use.

### **Special Precautions**

To avoid ultraviolet light damage to cell samples, perform the assay under low/dim light conditions.

### **Preparation of Samples and Slides**

1. Prepare Lysis Buffer, Alkaline Solution, and Electrophoresis Running Solution (see Preparation of Reagents) prior to performing the assay. Chill all solutions to 4°C thoroughly.
2. Heat OxiSelect™ Comet Agarose to 90-95°C in a water bath for 20 minutes, or until agarose liquefies. Cool the agarose by transferring the bottle to a 37°C water bath for 20 minutes.
3. Add 75 µL of Comet Agarose per well onto the OxiSelect™ Comet Slide to create a Base Layer. **Ensure complete well coverage by spreading the solution over the well with the pipette tip.** Maintaining the slide horizontally, transfer the slide to 4°C for 15 minutes.
4. Prepare cell samples, including controls, as follows:
  - Suspension Cells: Centrifuge cells at 700 x g for 2 minutes and discard supernatant. Wash cell pellet once with ice-cold PBS (without Mg<sup>2+</sup> and Ca<sup>2+</sup>), centrifuge, and discard the supernatant. Finally, resuspend the cells at 1 x 10<sup>5</sup> cells/mL in ice-cold PBS (without Mg<sup>2+</sup> and Ca<sup>2+</sup>).
  - Adherent Cells: Gently remove cells from flask/dish by scraping with a rubber policeman. Transfer cell suspension to a conical tube and centrifuge at 700 x g for 2 minutes, discarding the supernatant. Wash cell pellet once with ice-cold PBS (without Mg<sup>2+</sup> and Ca<sup>2+</sup>), centrifuge, and discard the supernatant. Finally, resuspend the cells at 1 x 10<sup>5</sup> cells/mL in ice-cold PBS (without Mg<sup>2+</sup> and Ca<sup>2+</sup>).
  - Tissue Preparation: Using dissection scissors, mince a small piece of tissue in 1-2 mL of ice cold PBS containing 20 mM EDTA (without Mg<sup>2+</sup> and Ca<sup>2+</sup>). Allow the tissue/cell suspension to stand for 5 minutes before transferring the supernatant to a centrifuge tube; avoid transferring debris. Centrifuge, discarding the supernatant, and then resuspend the cells at 1 x 10<sup>5</sup> cells/mL in ice-cold PBS (without Mg<sup>2+</sup> and Ca<sup>2+</sup>).
5. Combine cell samples with Comet Agarose (step 2) at 1:10 ratio (v/v), mix well by pipetting, and immediately transfer 75 µL/well onto the top of the Comet Agarose Base Layer (step 3). **Ensure complete well coverage by spreading the suspension very gently and carefully with the pipette tip, without disturbing the Base Layer.**

*Note: For multiple samples, maintain suspensions at 37°C to avoid gelation. Titrates samples again just prior to slide addition.*

6. Maintaining the slide horizontally, transfer the slide to 4°C in the dark for 15 minutes.
7. Carefully, transfer the slide to a small basin/container containing pre-chilled Lysis Buffer (~25 mL/slide). Immerse the slide in the buffer for 30-60 minutes at 4°C in the dark.
8. Carefully, aspirate the Lysis Buffer from the container and replace with pre-chilled Alkaline Solution (~25 mL/slide). Immerse the slide in the solution for 30 minutes at 4°C in the dark.

## **Assay Protocol**

### **I. TBE Electrophoresis**

1. Aspirate the Alkaline Solution from the container and replace with pre-chilled TBE Electrophoresis Solution. Immerse the slide for 5 minutes, and then repeat once more.
2. Maintaining the slide horizontally, carefully transfer the slide to a horizontal electrophoresis chamber. Fill the chamber with cold TBE Electrophoresis Solution until the buffer level covers the slide.
3. Apply voltage to the chamber for 10-15 minutes at 1 volt/cm (e.g. if the chamber electrodes are 35 cm apart, you would then apply 35 volts to the slide)
4. Maintaining the slide horizontally, carefully transfer the slide from the electrophoresis chamber to a clean, small basin/container containing pre-chilled DI H<sub>2</sub>O (~25 mL/slide). Immerse the slide for 2 minutes, aspirate, and then repeat twice more.
5. Aspirate the final water rinse and replace with cold 70% Ethanol for 5 minutes.
6. Maintaining the slide horizontally, remove the slide from the 70% Ethanol and allow to air dry.
7. Once the agarose and slide is completely dry, add 100 µL/well of diluted Vista Green DNA Dye (see Preparation of Reagents). Incubate at room temperature for 15 minutes.
8. View slides by epifluorescence microscopy using a FITC filter.

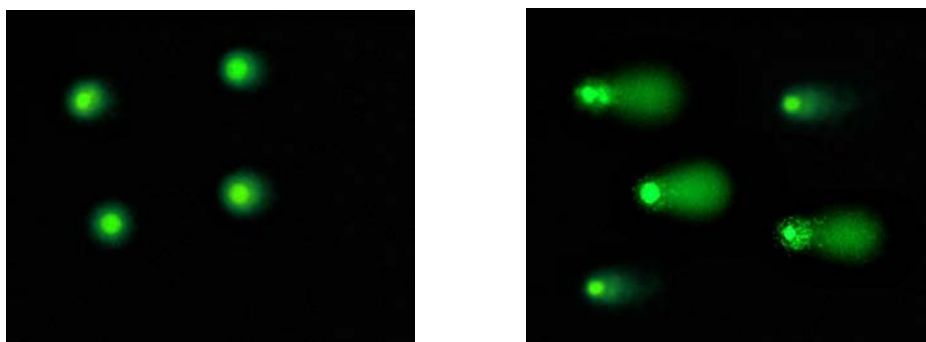
### **II. Alkaline Electrophoresis**

1. Maintaining the slide horizontally, carefully transfer the slide from the Alkaline Solution to a horizontal electrophoresis chamber. Fill the chamber with cold Alkaline Electrophoresis Solution until the buffer level covers the slide.
2. Apply voltage to the chamber for 15-30 minutes at 1 volt/cm (e.g. if the chamber electrodes are 35 cm apart, you would then apply 35 volts to the slide). Additionally, adjust the volume of Alkaline Electrophoresis Solution to produce a current setting of 300 mA.
3. Maintaining the slide horizontally, carefully transfer the slide from the electrophoresis chamber to a clean, small basin/container containing pre-chilled DI H<sub>2</sub>O (~25 mL/slide). Immerse the slide for 2 minutes, aspirate, and then repeat twice more.
4. Aspirate the final water rinse and replace with cold 70% Ethanol for 5 minutes.
5. Maintaining the slide horizontally, remove the slide from the 70% Ethanol and allow to air dry.

6. Once the agarose and slide is completely dry, add 100  $\mu\text{L}$ /well of diluted Vista Green DNA Dye (see Preparation of Reagents). Incubate at room temperature for 15 minutes.
7. View slides by epifluorescence microscopy using a FITC filter.

### **Example of Results**

The following figures demonstrate typical OxiSelect™ Comet Assay Kit results. One should use the data below for reference only. This data should not be used to interpret actual results.

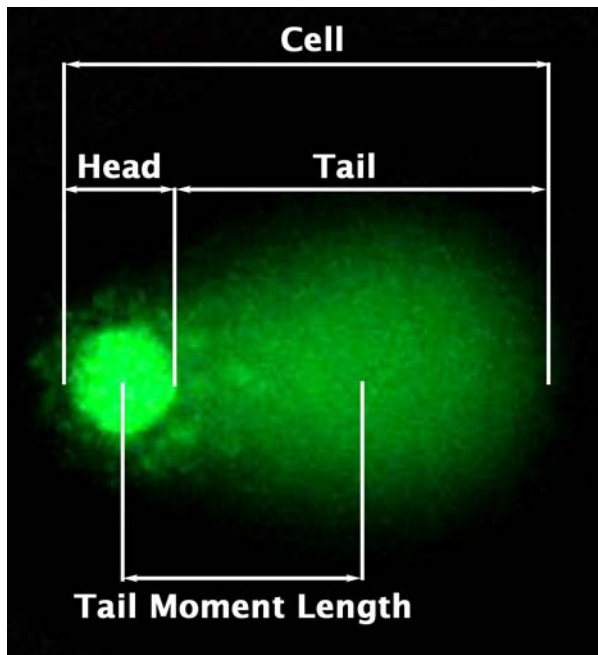


**Figure 2. Etoposide Treatment of Jurkat Cells.** Jurkat cells were untreated (left) or treated (right) with 20  $\mu\text{M}$  Etoposide for 4 hours before performing Comet Assay (alkaline electrophoresis conditions, 33 V/300 mA for 15 minutes).

### **Calculation of Results**

The DNA damage is quantified by measuring the displacement between the genetic material of the nucleus ('comet head') and the resulting 'tail'. Tail Moment and Tail DNA% are the two most common parameters to analyze Comet assay results. At least 50 -100 cells should be analyzed per sample. The Tail Moment has been suggested to be an appropriate index of induced DNA damage in considering both the migration of the genetic material as well as the relative amount of DNA in the tail.





**Figure 3: Typical Damaged DNA in Comet Assay.**

$\text{Tail DNA\%} = 100 \times \frac{\text{Tail DNA Intensity}}{\text{Cell DNA Intensity}}$

Tail Moment can be measured using one of the following methods:

(a) Olive Tail Moment = Tail DNA% x Tail Moment Length\*

(b) Extent Tail Moment = Tail DNA% x Length of Tail (see Figure 3)

A number of Comet Assay analysis software programs are commercially available, such as and Comet Assay IV (Perceptive Instruments) and CASPlab.

\*Tail Moment Length is measured from the center of the head to the center of the tail (see Figure 3)

## **References**

1. Ostling, O., and Johanson, K. J. (1984). *Biochem. Biophys. Res. Commun.* **123**, 291–298.
2. Singh, N. P., McCoy, M. T., Tice, R. R., and Schneider, E. L. (1988). *Exp. Cell. Res.* **175**, 184–191.
3. Olive, P. L., Banath, J. P., and Durand, R. E. (1990). *Radiat. Res.* **122**, 86–94.
4. De Boeck, M., Touil, N., De Visscher, G., Vande, P. A., and Kirsch-Volders, M. (2000). *Mutat. Res.* **469**, 181–197

## **Recent Product Citations**

1. Penndorf, D., et al. (2017). DNA strand breaks and TDP-43 mislocation are absent in the murine hSOD1G93A model of amyotrophic lateral sclerosis in vivo and in vitro. *PLoS One*. **12**(8):e0183684. doi: 10.1371/journal.pone.0183684. eCollection 2017.
2. Xia M, et al. (2017). Mediator MED23 Links Pigmentation and DNA Repair through the Transcription Factor MITF. *Cell Rep.* **20**(8):1794-1804. doi: 10.1016/j.celrep.2017.07.056.
3. Babangida Abubakar, I. et al. (2017). Enhancement of apoptotic activities on brain cancer cells via the combination of  $\gamma$ -tocotrienol and jerantinine A. *Phytomedicine*.
4. Bernabò, P. (2017). DNA damage and translational response during detoxification from copper exposure in a wild population of *Chironomus riparius*. *Chemosphere*. **173**:235-244. doi:10.1016/j.chemosphere.2017.01.052.
5. Zhi, Y. et al. (2017). Downregulated XPA promotes carcinogenesis of bladder cancer via impairment of DNA repair. *Tumour Biol.* **39**(2):1010428317691679. doi: 10.1177/1010428317691679.
6. Shen, H. et al. (2017). ARRB1 enhances the chemosensitivity of lung cancer through the mediation of DNA damage response. *Oncology Reports.* **37**(2):761-767. <http://dx.doi.org/10.3892/or.2016.5337>

7. Tse AK, et al. (2017). Sensitization of melanoma cells to alkylating agent-induced DNA damage and cell death via orchestrating oxidative stress and IKK $\beta$  inhibition. *Redox Biol.* **11**:562-576. doi: 10.1016/j.redox.2017.01.010.
8. Zhiqun T, et al (2017). Allelopathic effects of volatile organic compounds from *Eucalyptus grandis* rhizosphere soil on *Eisenia fetida* assessed using avoidance bioassays, enzyme activity, and comet assays. *Chemosphere.* **173**:307-317. doi: 10.1016/j.chemosphere.2017.01.00.
9. Kannappan R, et al. (2017). p53 Modulates the Fate of Cardiac Progenitor Cells Ex Vivo and in the Diabetic Heart In Vivo. *EBioMedicine.* **16**:224-237. doi: 10.1016/j.ebiom.2017.01.028.
10. Maiuri, T. et al. (2016). Huntingtin is a scaffolding protein in the ATM oxidative DNA damage response complex. *Hum. Mol. Genet.* doi:10.1093/hmg/ddw395.
11. Irianto, J. et al. (2016). Nuclear constriction segregates mobile nuclear proteins away from chromatin. *Mol. Bio. Cell* doi:10.1091/mbc.E16-06-0428.
12. Andronescu, E. et al. (2016). Nanomaterials for medical applications: Benefits and risks. *J Nanomater.* doi:10.1155/2016/8284319.
13. Liu, Z. et al. (2016). Canonical microRNAs enable differentiation, protect against DNA damage, and promote cholesterol biosynthesis in neural stem cells. *Stem Cells and Dev.* doi:10.1089/scd.2016.0259.
14. Dai, C. et al. (2016). Curcumin ameliorates furazolidone-induced DNA damage and apoptosis in human hepatocyte L02 cells by inhibiting ROS production and mitochondrial pathway. *Molecules.* **21**:1061.
15. Beegle, J. R. et al. (2016). Preclinical evaluation of mesenchymal stem cells overexpressing VEGF to treat critical limb ischemia. *Mol Ther Methods Clin Dev.* doi:10.1038/mtm.2016.53.
16. Suzuki, Y. et al. (2016). Pharmacodynamics of anti-inflammatory drugs–intranasal corticosteroid and dna damage. *Pharmacodynamics of anti-inflammatory drugs.* 117-126.
17. Zhang, J. et al. (2016). Inhibition of Glucose-6-Phosphate Dehydrogenase could Enhance 1, 4-Benzoquinone-induced Oxidative Damage in K562 Cells. *Oxid Med Cell Longev.* doi:10.1155/2016/3912515.
18. Jang, J. H. et al. (2016). APO-9'-fucoxanthinone extracted from undariopsis peteseniana protects oxidative stress-mediated apoptosis in cigarette smoke-exposed human airway epithelial cells. *Mar Drugs.* doi:10.3390/md14070140.
19. Ebeid, S. A. et al. (2016). Assessment of the radioprotective effect of propolis in breast cancer patients undergoing radiotherapy. New perspective for an old honey bee product. *J Radiat Res Appl Sci.* doi:10.1016/j.jrras.2016.06.001.
20. Wang, H, & Kim, N. H. (2016). CDK2 is required for the DNA damage response during porcine early embryonic development. *Biol Reprod.* doi:10.1095/biolreprod.116.140244.
21. Zhao, X. et al. (2016). Dioscin induces apoptosis in human cervical carcinoma HeLa and SiHa cells through ROS-mediated DNA damage and the mitochondrial signaling pathway. *Molecules.* doi:10.3390/molecules21060730.
22. Chen, X. et al. (2016). Zidovudine, abacavir and lamivudine increase the radiosensitivity of human esophageal squamous cancer cell lines. *Oncol Rep.* **36**:239-246.
23. Coleman, J. et al. (2016). Detecting Apoptosis, Autophagy, and Necrosis. *Apoptosis Methods in Toxicology* . doi:10.1007/978-1-4939-3588-8\_5.
24. Ding, Y. et al. (2016). Induction of ROS overload by alantolactone prompts oxidative DNA damage and apoptosis in colorectal cancer cells. *Int J Mol Sci.* doi:10.3390/ijms17040558.

Please see the complete list of product citations: <http://www.cellbiolabs.com/comet-assay-kits-3-well>.

## **Warranty**

These products are warranted to perform as described in their labeling and in Cell Biolabs literature when used in accordance with their instructions. THERE ARE NO WARRANTIES THAT EXTEND BEYOND THIS EXPRESSED WARRANTY AND CELL BIOLABS DISCLAIMS ANY IMPLIED WARRANTY OF MERCHANTABILITY OR WARRANTY OF FITNESS FOR PARTICULAR PURPOSE. CELL BIOLABS's sole obligation and purchaser's exclusive remedy for breach of this warranty shall be, at the option of CELL BIOLABS, to repair or replace the products. In no event shall CELL BIOLABS be liable for any proximate, incidental or consequential damages in connection with the products.

## **Contact Information**

Cell Biolabs, Inc.  
7758 Arjons Drive  
San Diego, CA 92126  
Worldwide: +1 858-271-6500  
USA Toll-Free: 1-888-CBL-0505  
E-mail: [tech@cellbiolabs.com](mailto:tech@cellbiolabs.com)  
[www.cellbiolabs.com](http://www.cellbiolabs.com)

©2008-2018: Cell Biolabs, Inc. - All rights reserved. No part of these works may be reproduced in any form without permissions in writing.