

LHX4 MaxPab mouse polyclonal antibody (B01)

TRA-089884-B01

Specification

Product Description: Mouse polyclonal antibody raised against a full-length human LHX4 protein.

Immunogen LHX4 (NP_203129.1, 1 a.a. ~ 390 a.a) full-length human protein.
:

Immunogen Sequence (without GST): MMQSATVPAEGAVKGLPEMLGVPMQQIPQCAGCNQHILDKFILKVLDRHW
HSSCLKCADCQMQLADRCFSRAGSVYCKEDFFKRFGTKCTACQQGIPPTQ
VVRKAQDFVYHLHCFACIICNRQLATGDEFYLMEDGRLVCKEDYETAKQN
DDSEAGAKRPRTTITAKQLETLKNAYKNSPKPARHVREQLSSETGLDMRV
VQVWFQNRRAKEKRLKKGDAGRHRWGQFYKSVKRSRGSSKQEKESAEDCG
VSDSELSFREDQILSELGHTNRIYGNVGDVTGGQLMNGSFSMDGTGQSYQ
DLRDGSPYGIQSPSSISLPSHAPLLNGLDYTVDNLGIIAHAGQGVSQ
TLRAMAGGPTSDISTGSSVGYPDFPTSPGSWLDEMDHPPF

Cross Reactivity: Human

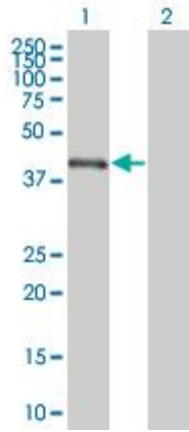
Storage Buffer: No additive

Storage Instruction: Store at -20°C or lower. Aliquot to avoid repeated freezing and thawing.

Quality Control Testing: Antibody reactive against mammalian transfected lysate.

Applications

Western Blot (Transfected lysate)

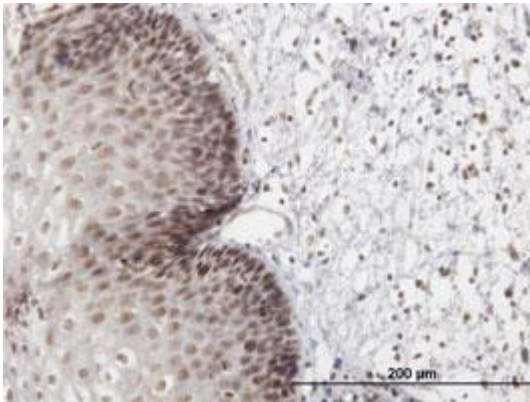


Western Blot analysis of LHX4 expression in transfected 293T cell line (H00089884-T01) by LHX4 MaxPab polyclonal antibody.

Lane 1: LHX4 transfected lysate(42.9 KDa).

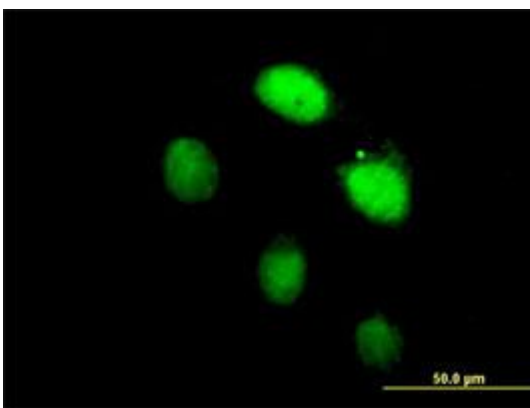
Lane 2: Non-transfected lysate.

Immunohistochemistry (Formalin/PFA-fixed paraffin-embedded sections)



Immunoperoxidase of purified MaxPab antibody to LHX4 on formalin-fixed paraffin-embedded human esophagus. [antibody concentration 3 ug/ml]

Immunofluorescence



Immunofluorescence of purified MaxPab antibody to LHX4 on HeLa cell. [antibody concentration 10 ug/ml]

Detection Antibody

Gene Information

Entrez GeneID: [89884](#)

**GeneBank
Accession#:** [NM_033343.2](#)

**Protein
Accession#:** [NP_203129.1](#)

Gene Name: LHX4

Gene Alias: Gsh-4, Gsh4

**Gene
Description:** LIM homeobox 4

Omim ID: [602146](#), [606606](#)

Gene Ontology: [Hyperlink](#)

**Gene
Summary:** This gene encodes a member of a large protein family which contains the LIM domain, a unique cysteine-rich zinc-binding domain. The encoded protein may function as a transcriptional regulator and be involved in control of differentiation and development of the pituitary gland. Mutations in this gene are associated with syndromic short stature and pituitary and hindbrain defects. An alternative splice variant has been described but its biological nature has not been determined.

**Other
Designations:** LIM homeobox protein 4, OTTHUMP00000033083