

# CDC42BPB monoclonal antibody (M02), clone 6G3

## MET-009578-M02

### Specification

---

**Product Description:** Mouse monoclonal antibody raised against a partial recombinant CDC42BPB.

**Immunogen:** CDC42BPB (AAD37506, 1580 a.a. ~ 1679 a.a) partial recombinant protein with GST tag. MW of the GST tag alone is 26 KDa.

**Immunogen Sequence (without GST):** SKMISNPTNFNHVAHMGPGDGMQVLM DLPLSAVPPSQEERPGPAPTNLAR QPPSRNKPYISWPSSGGSEPSVTVPLRSMSDPDQDFDKEPDS DSTKHSTP

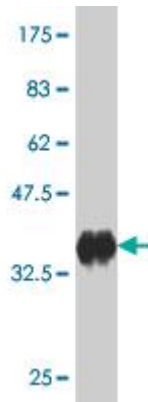
**Cross Reactivity:** Human

**Isotype:** IgG2a Kappa

**Storage Buffer:** In 1x PBS, pH 7.2

**Storage Instruction:** Store at -20°C or lower. Aliquot to avoid repeated freezing and thawing.

**Quality Control Testing:** Antibody Reactive Against Recombinant Protein.

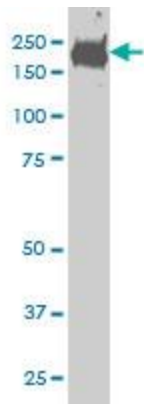


Western Blot detection against Immunogen (37 KDa) .

### Applications

---

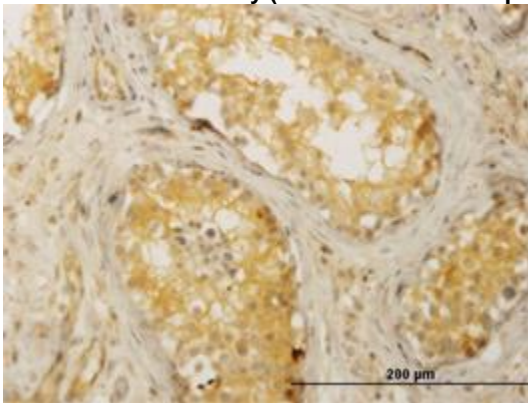
**Western Blot (Cell lysate)**



CDC42BPB monoclonal antibody (M02), clone 6G3 Western Blot analysis of CDC42BPB expression in HeLa ( Cat # L013V1 ).

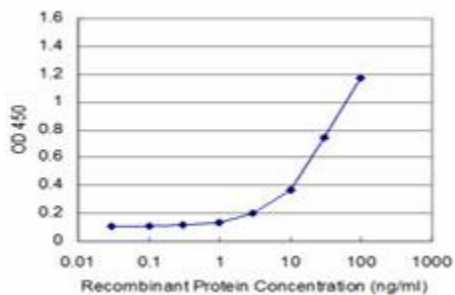
**Western Blot (Recombinant protein)**

**Immunohistochemistry (Formalin/PFA-fixed paraffin-embedded sections)**



Immunoperoxidase of monoclonal antibody to CDC42BPB on formalin-fixed paraffin-embedded human testis. [antibody concentration 3 ug/ml]

**Sandwich ELISA (Recombinant protein)**



Detection limit for recombinant GST tagged CDC42BPB is approximately 1 ng/ml as a capture antibody.

**ELISA**

### Gene Information

Entrez GeneID: [9578](#)

GeneBank Accession#: [AF128625](#)

Protein Accession#: [AAD37506](#)

**Gene Name:** CDC42BPB

**Gene Alias:** KIAA1124, MRCKB

**Gene Description:** CDC42 binding protein kinase beta (DMPK-like)

**Gene Ontology:** [Hyperlink](#)

**Gene Summary:** This gene encodes a member of the serine/threonine protein kinase family. The encoded protein contains a Cdc42/Rac-binding p21 binding domain resembling that of PAK kinase. The kinase domain of this protein is most closely related to that of myotonic dystrophy kinase-related ROK. Studies of the similar gene in rat suggested that this kinase may act as a downstream effector of Cdc42 in cytoskeletal reorganization.

**Other Designations:** CDC42-binding protein kinase beta, CDC42-binding protein kinase beta (DMPK-like), myotonic dystrophy protein kinase-like beta