

# PNMA1 monoclonal antibody (M01), clone 4G6

## MET-009240-M01

### Specification

---

**Product Description:** Mouse monoclonal antibody raised against a partial recombinant PNMA1.

**Immunogen:** PNMA1 (NP\_006020, 62 a.a. ~ 161 a.a) partial recombinant protein with GST tag. MW of the GST tag alone is 26 KDa.

**Immunogen Sequence (without GST):** KAALLELTGAVDYAAIPREMPGKGGVWVKVLFKPPTSDAEFLERLHLFLAR  
EGWTVQDVARVLGFGQNPTPTPGPEMPAEMLNLYILDNVIQPLVESIWYKR\*

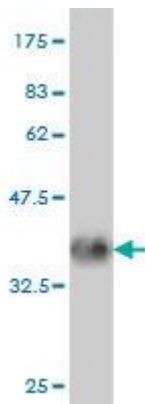
**Cross Reactivity:** Human, Mouse

**Isotype:** IgG2a Kappa

**Storage Buffer:** In 1x PBS, pH 7.2

**Storage Instruction:** Store at -20°C or lower. Aliquot to avoid repeated freezing and thawing.

**Quality Control Testing:** Antibody Reactive Against Recombinant Protein.

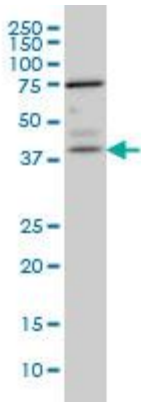


Western Blot detection against Immunogen (37 KDa) .

### Applications

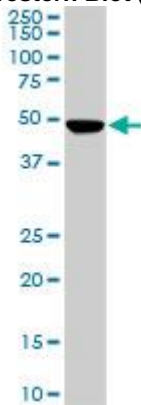
---

**Western Blot (Cell lysate)**



PNMA1 monoclonal antibody (M01), clone 4G6 Western Blot analysis of PNMA1 expression in IMR-32 ( Cat # L008V1 ).

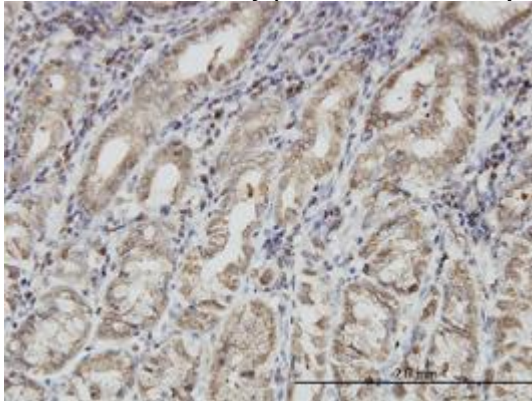
**Western Blot (Cell lysate)**



PNMA1 monoclonal antibody (M01), clone 4G6. Western Blot analysis of PNMA1 expression in Raw 264.7 ( Cat # L024V1 ).

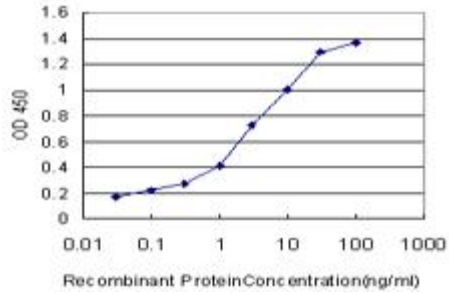
**Western Blot (Recombinant protein)**

**Immunohistochemistry (Formalin/PFA-fixed paraffin-embedded sections)**



Immunoperoxidase of monoclonal antibody to PNMA1 on formalin-fixed paraffin-embedded human stomach. [antibody concentration 3 ug/ml]

**Sandwich ELISA (Recombinant protein)**



Detection limit for recombinant GST tagged PNMA1 is approximately 0.1ng/ml as a capture antibody.

#### ELISA

#### Gene Information

---

**Entrez GeneID:** [9240](#)

**GeneBank Accession#:** [NM\\_006029](#)

**Protein Accession#:** [NP\\_006020](#)

**Gene Name:** PNMA1

**Gene Alias:** MA1

**Gene Description:** paraneoplastic antigen MA1

**Omim ID:** [604010](#)

**Gene Ontology:** [Hyperlink](#)

**Other Designations:** neuron- and testis-specific protein 1, paraneoplastic neuronal antigen MA1