

# KLF11 monoclonal antibody (M01), clone 8F4

## MEM-008462-M01

### Specification

---

**Product Description:** Mouse monoclonal antibody raised against a partial recombinant KLF11.

**Immunogen:** KLF11 (NP\_003588, 404 a.a. ~ 513 a.a) partial recombinant protein with GST tag. MW of the GST tag alone is 26 KDa.

**Immunogen Sequence (without GST):** TYFKSSHLKAHLRTHHTGEKPFNCSWDGCDKKFARSDELSRHRRTHHTGEKK  
FVCPVCDRRFMRSDHLLKHARRHMTTKKIPGWQAEVGLNRIASAESPGS  
PLVSMPPASA\*

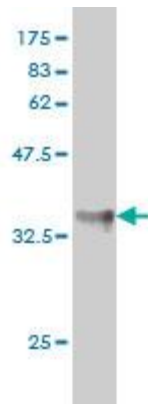
**Cross Reactivity:** Human

**Isotype:** IgG2a Kappa

**Storage Buffer:** In 1x PBS, pH 7.2

**Storage Instruction:** Store at -20°C or lower. Aliquot to avoid repeated freezing and thawing.

**Quality Control Testing:** Antibody Reactive Against Recombinant Protein.

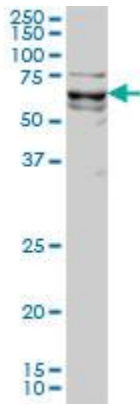


Western Blot detection against Immunogen (38.1 KDa) .

## Applications

---

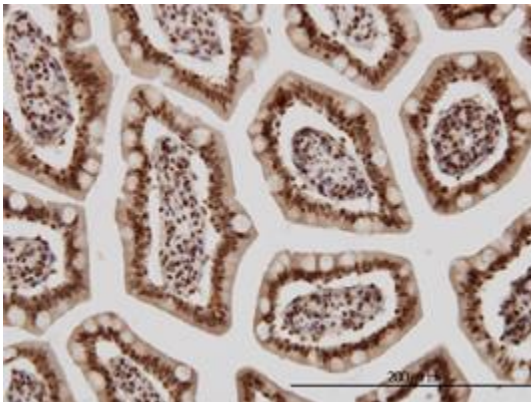
### Western Blot (Cell lysate)



KLF11 monoclonal antibody (M01), clone 8F4 Western Blot analysis of KLF11 expression in HeLa NE ( Cat # L013V3 ).

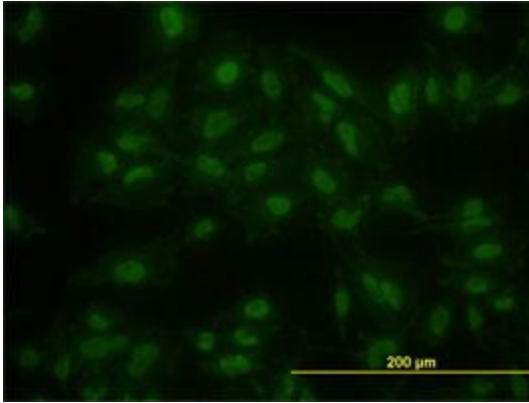
### Western Blot (Recombinant protein)

### Immunohistochemistry (Formalin/PFA-fixed paraffin-embedded sections)



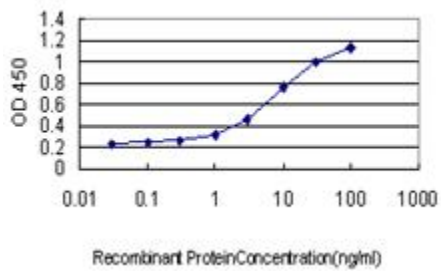
Immunoperoxidase of monoclonal antibody to KLF11 on formalin-fixed paraffin-embedded human small Intestine. [antibody concentration 3 ug/ml]

### Immunofluorescence



Immunofluorescence of monoclonal antibody to KLF11 on HeLa cell. [antibody concentration 10 ug/ml]

### Sandwich ELISA (Recombinant protein)



Detection limit for recombinant GST tagged KLF11 is approximately 0.1ng/ml as a capture antibody.

### ELISA

#### Gene Information

---

Entrez GeneID: [8462](#)

GeneBank Accession#: [NM\\_003597](#)

Protein Accession#: [NP\\_003588](#)

**Gene Name:** KLF11

**Gene Alias:** FKLF, FKLF1, MODY7, TIEG2, Tieg3

**Gene Description:** Kruppel-like factor 11

**Omim ID:** [603301](#), [610508](#)

**Gene Ontology:** [Hyperlink](#)

**Other Designations:** OTTHUMP00000147532, TGFB inducible early growth response 2