

F1A alpha Antibody

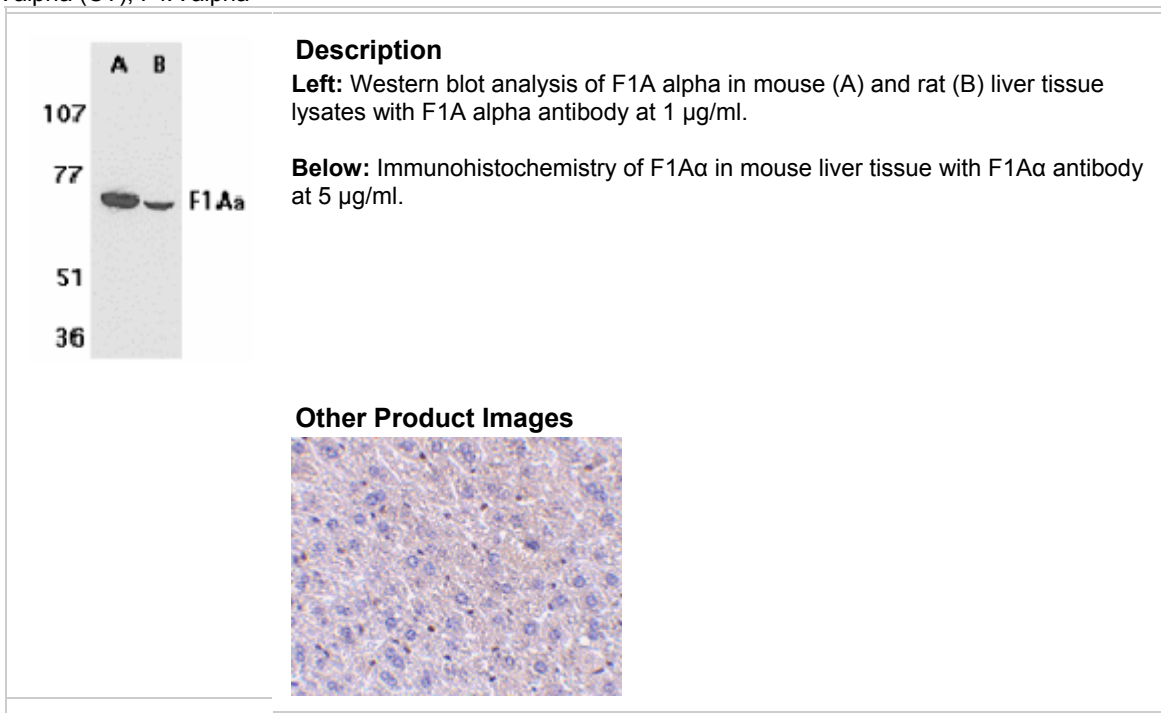
APO-2279

Background

Fas and tumor necrosis factor receptor 1 (TNFR1) are two prototype members in the death receptor family. A novel protein that associates with the intracellular domains of Fas and TNFR1 was recently identified and designated F1A α and FEM1b (1,2). F1A α /FEM1 β is the homologue of *C. elegans* sex determining protein FEM-1 (1,2). FEM-1/F1A α is cleaved by CED-3 and caspase (3). FEM-1/F1A α associates with CED-4 and its mammalian homologue Apaf-1 (3). Overexpression of F1A α induces apoptosis. F1A α is therefore a novel member of the death receptor associated protein that mediates apoptosis. F1A α is expressed in a variety of human and mouse tissues (1,2)

Additional Names

F1A alpha (CT), F1A alpha



Source

F1A alpha antibody was raised against a peptide corresponding to amino acids 609 to 622 of human F1A alpha. This sequence is identical to the corresponding sequence of mouse FEM1b .

Purification

Affinity chromatography purified via peptide column

Clonality / Clone

This is a polyclonal antibody.

Host

F1A alpha antibody was raised in rabbit.

Please use anti-rabbit secondary antibodies.

Immunogen

Human F1A alpha Peptide

Application

F1Ab antibody can be used for detection of F1Ab by Western blot at 0.5 to 1 µg/ml. An approximately 70 kDa band can be detected. It is human, mouse, and rat reactive.

Tested Application

E, WB, IHC

Buffer

Antibody is supplied in PBS containing 0.02% sodium azide.

Blocking Peptide

F1A alpha Peptide (contact Zyagen for availability)

Storage

F1A alpha antibody can be stored at 4°C, stable for one year. As with all antibodies care should be taken to avoid repeated freeze thaw cycles. Antibodies should not be exposed to prolonged high temperatures.

Positive Control

1. Mouse Liver Tissue Lysate (contact Zyagen for availability)
2. Rat Liver Tissue Lysate (contact Zyagen for availability)

Species Reactivity

H, M, R

Protein GI Number

6175869

Protein Accession Number

AAF05314

Short Description

(CT) A novel death receptor-binding protein

References

1. Chan SL, Tan KO, Zhang L, Yee KS, Ronca F, Chan MY, Yu VC. F1A α , a death receptor-binding protein homologous to the *Caenorhabditis elegans* sex-determining protein, FEM-1, is a caspase substrate that mediates apoptosis. *J Biol Chem.* 1999;274(45):32461-8.
2. Ventura-Holman T, Maher JF. Sequence, organization, and expression of the human FEM1B gene. *Biochem Biophys Res Commun* 2000;267(1):317-20
3. Chan SL, Yee KS, Tan KM, Yu VC. The *Caenorhabditis elegans* sex determination protein FEM-1 is a CED-3 substrate that associates with CED-4 and mediates apoptosis in mammalian cells. *J Biol Chem.* 2000;275(24):17925-8. (WD0102)

