

# ART3 monoclonal antibody (M05), clone 3A2

## APO-000419-M05

### Specification

---

**Product Description:** Mouse monoclonal antibody raised against a partial recombinant ART3.

**Immunogen:** ART3 (NP\_001170, 29 a.a. ~ 139 a.a) partial recombinant protein with GST tag. MW of the GST tag alone is 26 KDa.

**Immunogen Sequence (without GST):** LDMAADNAFDDEYLKCTDRMEIKYVPQLLKEEKASHQQLDTVWENAKAKWA  
ARKTQIFLPMNFKDNHGIALMAYISEAQEQTPFYHLFSEAVKMAGQSRED  
YIYGFQFKAF\*

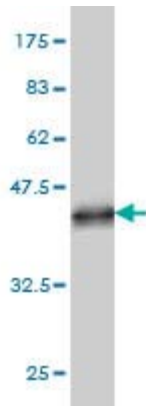
**Cross Reactivity:** Human

**Isotype:** IgG2b Kappa

**Storage Buffer:** In 1x PBS, pH 7.2

**Storage Instruction:** Store at -20°C or lower. Aliquot to avoid repeated freezing and thawing.

**Quality Control Testing:** Antibody Reactive Against Recombinant Protein.



Western Blot detection against Immunogen (38.21 KDa) .

## Publication Reference

---

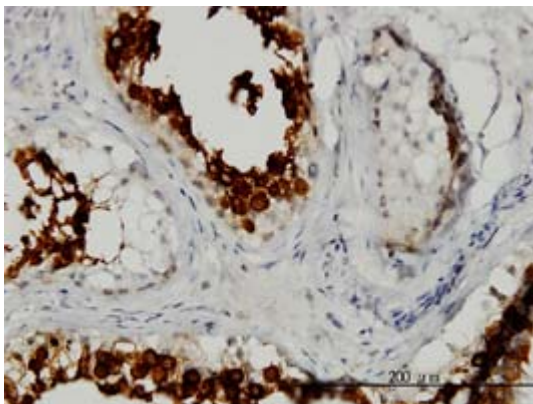
1. [Genome-Wide Expression of Azoospermia Testes Demonstrates a Specific Profile and Implicates ART3 in Genetic Susceptibility.](#)  
 Okada H, Tajima A, Shichiri K, Tanaka A, Tanaka K, Inoue I. PLoS Genet. 2008 Feb;4(2):e26.

## Applications

---

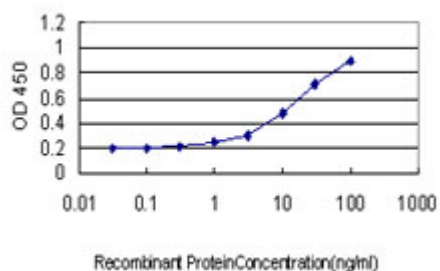
### Western Blot (Recombinant protein)

#### Immunohistochemistry (Formalin/PFA-fixed paraffin-embedded sections)



Immunoperoxidase of monoclonal antibody to ART3 on formalin-fixed paraffin-embedded human testis. [antibody concentration 2 ug/ml]

#### Sandwich ELISA (Recombinant protein)



Detection limit for recombinant GST tagged ART3 is approximately 1ng/ml as a capture antibody.

## ELISA

### Gene Information

---

**Entrez GeneID:** [419](#)

**GeneBank  
Accession#:** [NM\\_001179](#)

**Protein  
Accession#:** [NP\\_001170](#)

**Gene Name:** ART3

**Gene Alias:** FLJ26404

**Gene  
Description:** ADP-ribosyltransferase 3

**Omim ID:** [603086](#)

**Gene Ontology:** [Hyperlink](#)

**Gene Summary:** ADP-ribosylation is a reversible posttranslational modification used to regulate protein function. ADP-ribosyltransferases, such as ART3, transfer ADP-ribose from NAD<sup>+</sup> to the target protein, and ADP-ribosylhydrolases (see PARG; MIM 603501) reverse the reaction (Glowacki et al., 2002 [PubMed 12070318]).

**Other  
Designations:** mono-ADP-ribosyltransferase