



Meridian

Life Science,® Inc.

Innovative Solutions. Trusted Partner.®

5171 Wilfong Road

Memphis, TN 38134

USA

Telephone: 901-382-8716

Fax: 901-333-8223

Email: info@meridianlifescience.com

www.MeridianLifeScience.com

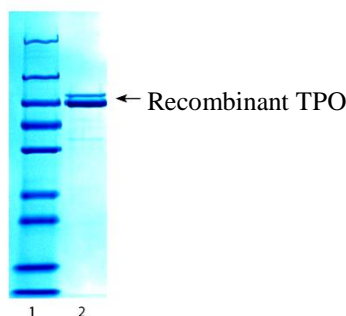
CERTIFICATE OF ANALYSIS

Important Note: Centrifuge before opening to ensure complete recovery of vial contents.

Catalog #: A01309H **Lot #:** 16J29217

Description: Human TPO, Recombinant
Thyroid Peroxidase (TPO) (a.a. 19-846), Recombinant

Recombinant soluble extracellular domain of human thyroid peroxidase (amino acids 19-846). Does not contain a fusion partner. Molecular weight is 91,981 Da. Immunoreactive in ELISA with human anti-TPO autoantibodies.



SDS-PAGE of recombinant human TPO expressed in insect cells, reducing conditions.

Lane 1: Molecular Weight Standards (250, 130, 100, 70, 55, 35, 25, 15 and 10 kDa)

Lane 2: Human Recombinant TPO, 1 µg

Gel staining: Coomassie Brilliant Blue G-250

The electrophoretic heterogeneity of TPO is apparently caused by differential glycosylation of the protein.

Source: Recombinant protein expressed in insect cells.

Format: Affinity Purified, Lyophilized
Reconstitute with deionized water.

Purification: > 95% pure (SDS-PAGE). Affinity purification using a monoclonal antibody and ion exchange chromatography.

Concentration: Lyophilized: 0.95 mg/mL

Buffer: Lyophilized from 20 mM Tris-HCl, pH 8.0 containing 250 mM Sodium Chloride, 0.1 mM Potassium Iodide and 5% D-Mannitol.

Preservative: None

Applications: Suitable for use in ELISA and Western Blot. Each laboratory should determine an optimum working titer for use in its particular application. Other applications have not been tested but use in such assays should not necessarily be excluded.

Storage: Store lyophilized product at -20°C. After reconstitution, aliquot and store at -70°C. Avoid multiple freeze/thaw cycles.

Inactivation: Not Applicable

Safety Note(s): Refer to the appropriate Safety Data Sheet (SDS) for additional information.

Brenda Dunn

19Oct2017

FOR RESEARCH OR FURTHER MANUFACTURING USE ONLY