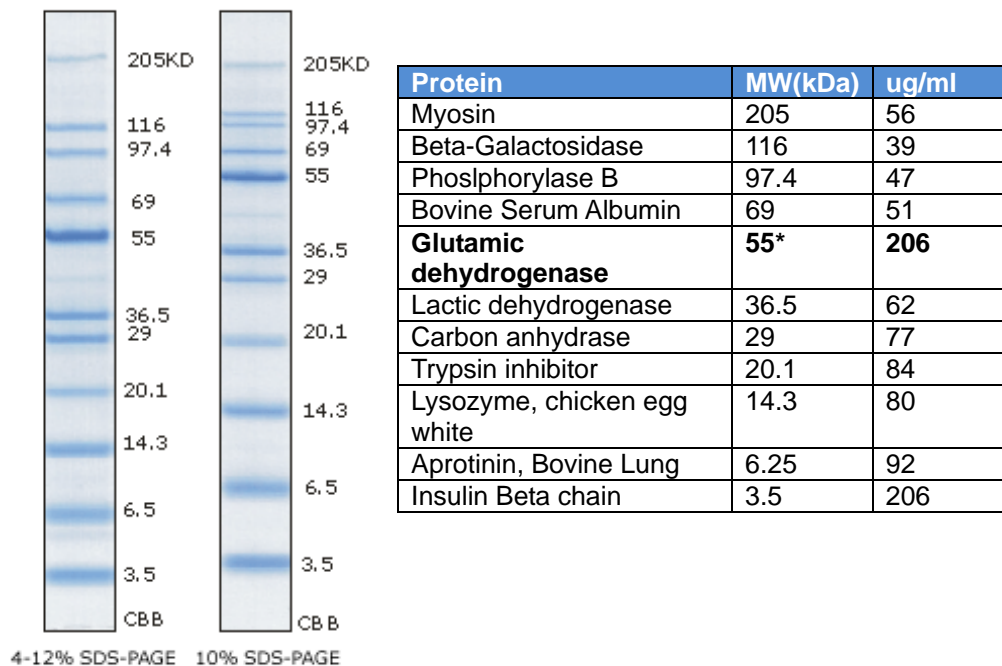


EzWay™ Protein-Blue MW Marker

- 1. **Catalog No.** K08000
- 2. **Quantity** 500 ul x 2
- 3. **Storage & Stability** Store at -20°C
- 4. **Description** EzWay™ Protein-Blue MW Marker is mixture of purified proteins that resolves to 11 bands during electrophoresis.
 - Unstained protein standard for estimation of molecular weight of your sample protein
 - Contains 11 polypeptides
 - Molecular weight range : 3.5-205 kDa
 - Ready-to-use & Easy-to-use : prediluted in loading buffer
 - Extra intense on 55 kDa band for easy identification
 - Two vials of 500 ul each are provided
- 5. **MW Range** 3.5 - 205 kDa
- 6. **No. of Application** 200 mini-gels (5 ul each)

7. Contents



8. How to Use Before using, dissolve sediment warming by hand for about 1 minute and mixing lightly, and then load directly 5 ul on to a mini-gel. Please store the vial in a freezer promptly after use.

9. Note This marker is suitable for determination of exact MW.

