



Diacclone

## DIACLONE Immunology Products

### Anti-Human CD45RA Unconjugated

Clone: B-C15

**CATALOGUE N° :** 854.323.020

**CLONE :** B-C15

**ISOTYPE :** Mouse IgG2a

**IMMUNISATION :** Reh6 cell line

**HYBRIDOMA :** Myeloma X63/AG.8653 x Balb/c spleen cells

**SPECIFICITY :** Recognises the restricted Leucocyte Common Antigen (LCA) with different isoforms of 205/220 kDa

**QUANTITY :** 200 tests / 2 ml (Discovery Size also available please enquire)

**PURIFICATION :** Ion exchange chromatography

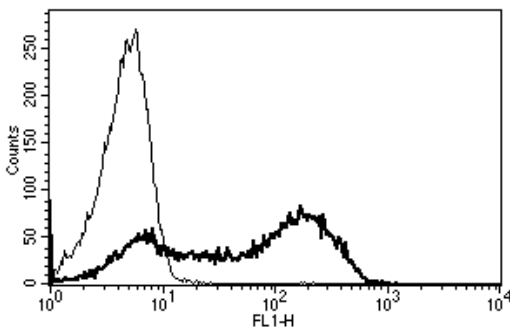
**FORMAT :** Phosphate-buffered saline with 1 % BSA and 0.09 % sodium azide

**WORKING DILUTION :** Use 10 µl to label 10<sup>6</sup> cells or 100 µl of whole blood

**STORAGE :** Stable at +2-8°C for 12 months  
For longer storage, freeze aliquots

**APPLICATION :** Suitable for flow cytometry  
Immunoprecipitation : not tested  
Western blot : not tested  
Suitable for immunohistochemistry

**REFERENCES :** Krzysiek R. et al., J. Immunol., 1999; 162 : 4455 -4463



A typical staining pattern with the B-C15 monoclonal antibody of lymphocytes

☛ Sodium azide is a poisonous and hazardous substance, handle and dispose of properly

Version 4 - 03.13

For research use only

#### 25 YEARS OF EXPERTISE

With over 25 years experience and extensive expertise we are committed to providing excellence in Monoclonal Antibody and Immunoassay development.

The expanding range of Diacclone Immunology products is specifically designed to advance research applications.

Our experience and expertise coupled to the diversity of our product range makes Diacclone a clear choice to

#### Fast Track Your Research...

#### DIACLONE PRODUCTS



Monoclonal Antibodies



ELISA



ELISpot



DIApex

#### DIACLONE SAS

1 Boulevard A. Fleming – BP 1985  
25020 Besançon cedex – France  
Tel: +33 (0)3 81 41 38 38  
Fax: +33 (0)3 81 41 36 36  
info@diacclone.com



[www.diacclone.com](http://www.diacclone.com)