



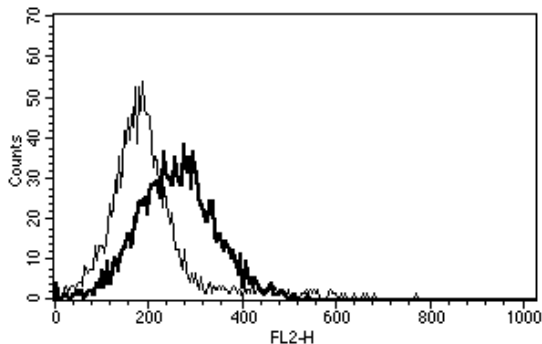
Diacclone

DIACLONE Immunology Products


Anti-Human CD253 PE Conjugated

Clone: B-S23

CATALOGUE N° :	853.082.010
CLONE :	B-S23
ISOTYPE :	Mouse IgG1
IMMUNISATION :	Recombinant human TRAIL
HYBRIDOMA :	Myeloma X63/AG.8653 x Balb/c spleen cells
SPECIFICITY :	Recognises the TRAIL, APO2L antigen, a 32 kDa protein
WORKSHOP :	VIII
QUANTITY :	100 tests / 1ml (Discovery Size also available please enquire)
PURIFICATION :	Ion exchange chromatography
FORMAT :	Phosphate-buffered saline with 5% BSA and 0.1% sodium azide
WORKING DILUTION :	Reconstitute with 1 ml deionised water Use 10 µl to label 10 ⁶ cells or 100 µl of whole blood
STORAGE :	Stable at +2-8°C for six months after reconstitution DO NOT FREEZE
APPLICATION :	Suitable for flow cytometry
REFERENCES :	Bremer E. et al., Cancer Res., 2005; 65(8): 3380 - 3388 Bremer E. et al., J. Biol. Chem., 2005; 280(11): 10025 - 10033 de Bruyn, M. et al., Clin. Cancer Res., 2011; 17: 5626-5637 Herbeuval J-P. et al., Blood, 2005; 105(6): 2458 - 2464



A typical staining pattern with the B-S23 monoclonal antibody of IFN α 2+CD3 mAb+CD28 mAb activated lymphocytes

 Sodium azide is a poisonous and hazardous substance, handle and dispose of properly

Version 6 - 11.11

For research use only

25 YEARS OF EXPERTISE

With over 25 years experience and extensive expertise we are committed to providing excellence in Monoclonal Antibody and Immunoassay development.

The expanding range of Diacclone Immunology products is specifically designed to advance research applications.

Our experience and expertise coupled to the diversity of our product range makes Diacclone a clear choice to

Fast Track Your Research...

DIACLONE PRODUCTS



Monoclonal Antibodies



ELISA



ELISpot



DIAplex

DIACLONE SAS

1 Boulevard A. Fleming – BP 1985
25020 Besançon cedex – France
Tel: +33 (0)3 81 41 38 38
Fax: +33 (0)3 81 41 36 36
info@diacclone.com



www.diacclone.com