

Monoclonal anti-Remicade® (Infliximab): Detection of Remicade® and anti-Remicade (ADA) Product reference: DDX5001-DDX5002

Description

Remicade® (Infliximab) is a chimeric monoclonal antibody targeting TNF- α , used for the treatment of autoimmune diseases such as rheumatoid arthritis, ankylosis spondylitis, Crohn's disease, psoriatic arthritis or ulcerative colitis. We have generated a panel of anti-Remicade® (anti-Infliximab) monoclonal murine antibodies. These antibodies can be used to develop and calibrate Remicade (Infliximab) and anti-Remicade (anti-Infliximab) detection assays.

Species: mouse
Specificity: Remicade®(Infliximab)
Immunogen: Remicade® (Janssen Biologics B.V.) (Infliximab)
Cross-reactivity: negative for rituximab (mabthera) and roactemra (tocilizumab)
Purification: QMA Hyper D ion exchange chromatography
Formulation/size: **Purified:** 100 μ g in 200 μ l / 50 μ g in 100 μ l Tris-NaCl pH 8
Coupled: 100 μ g in 200 μ l / 50 μ g in 100 μ l PBS 50% glycerol

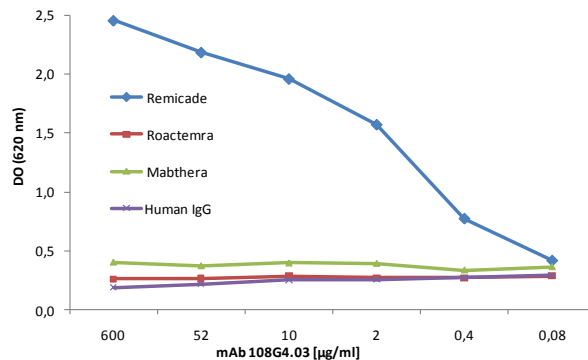
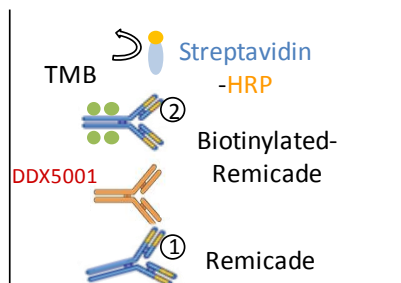
Available formats:

Reference N°		Format	Clone	Isotype	Application tested
50 μ g	100 μ g				
DDX5001P-50	DDX5001P-100	Purified	108G4.03	IgG1	Bridging ELISA positive control for anti-Remicade detection, Inhibition of Remicade binding to TNF- α , Capture antibody for Remicade detection
DDX5001B-50	DDX5001B-100	Biotin			
DDX5002P-50	DDX5002P-100	Purified	103A8.03	IgG1	Bridging ELISA positive control for anti-Remicade detection, Inhibition of Remicade binding to TNF- α
DDX5002B-50	DDX5002B-100	Biotin			

Other clones available on request

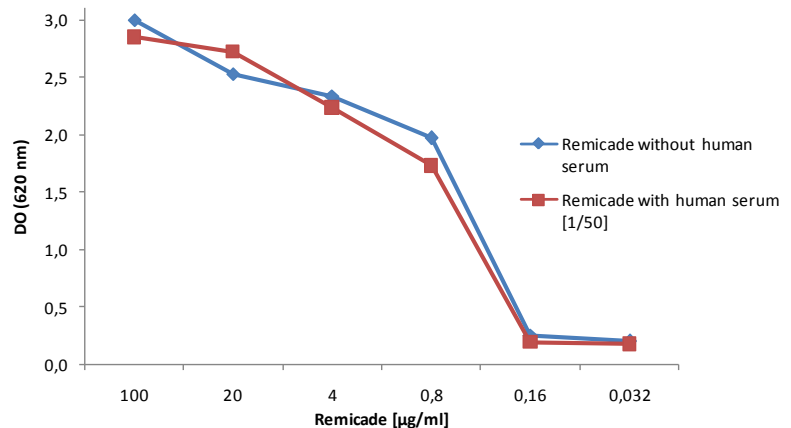
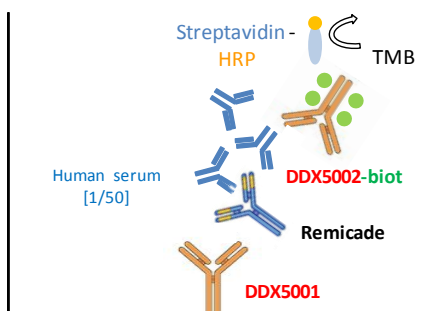
Positive control for anti-remicade (anti-Infliximab) detection using bridging Elisa

DDX5001



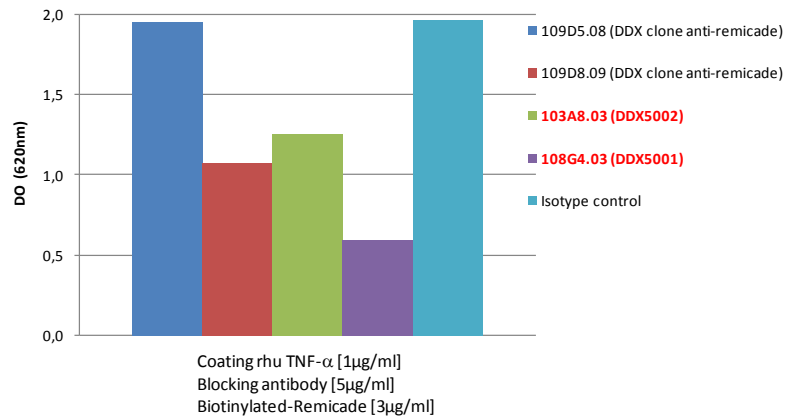
Remicade (Infliximab) detection is not affected by human serum

Elisa detection of Remicade with or without human serum
DDX5001/DDX5002-Biot

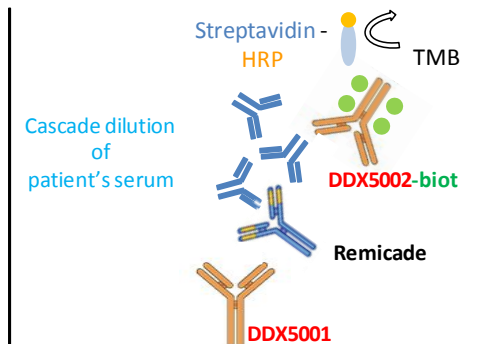


Inhibition of Remicade (Infliximab) binding to TNF- α

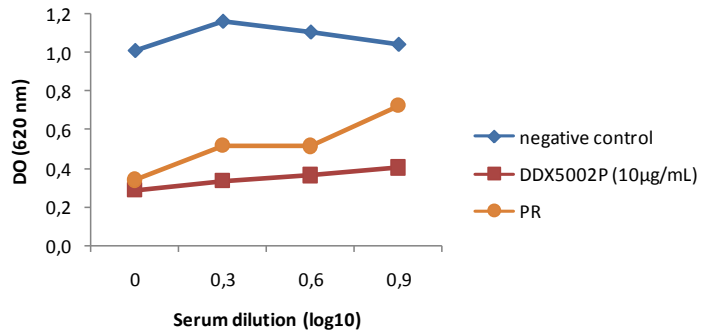
Inhibition of Remicade binding to TNF- α



Anti-Remicade (Anti-Infliximab) detection by competition ELISA in serum from Remicade (Infliximab) - treated polyarthritis rheumatoid patients



Anti-Remicade detection in PR patient's sera (Remicade 8 μ g/mL)



Other clones available on request

# catalog	Clone	Specificity			Detection	Capture	Bridging	Inhibition of remicade binding to TNF- α	Isotype
		ROACTEMRA	REMICADE	MABTHERA					
	102C3.04	-	+	-	+	-	-	-	ND
	107A12.04	-	+	-	+/-	-	-	-	ND
	107C8.11	-	+	-	+/-	-	-	-	ND
	108D12.11	-	+	-	+	-	-	-	ND
	108E3.11	-	+	-	+++	+	-	-	IgG1
	109D6.07	-	+	-	+/-	-	-	-	ND
	109G3.24	-	+	-	+++	+++	+	+/-	IgM
	210D4.10	-	+	-	++	+++	-	-	IgG1
	210G4.02	-	+	-	+/-	-	-	-	ND
DDX5001	108G4.03	-	+	-	+++	+++	++++	++++	IgG1
DDX5002	103A8.03	-	+	-	+++	+++	++++	++	IgG1
	109D8.09	-	+	-	++	+++	++	++	IgG2a

Usage recommendation:

- *This monoclonal antibody may be used between 5-25 μ g/ml.
- *Optimal dilution should be determined by each laboratory for each application.
- *Coupled antibody: to maintain RT before use.

Aliquot storage conditions:

- 20°C. KEEP CONTENTS STERILE: no preservative.**
- Purified antibodies: avoid repeated freeze/thaw cycles.**
- Coupled antibodies: glycerol protects from freezing.**

Not for use in humans. For research purpose only