

Monoclonal Anti-human IL-7R α /CD127

Product reference: DDX0700

Description

The IL7-R consists of 2 chains, IL-7R α known as CD127 and common cytokine receptor γ chain known as CD132. A 75 to 80kDa human IL-7 receptor has been cloned that belongs to hematopoietic cytokine-receptor super family. R34-34, raised against human leukemic pre-B cells, recognized a molecule expressed on normal B cell precursors but not on mature B cells. This antibody specifically reverted IL-7 mediated growth inhibition of leukemic BCP (normal B cells precursors) and mature T cells. IL-7R α expression is dramatically influenced by cytokines and antigens. This IL-7R displays both high and low affinity for its ligand (IL-7). Inhibitory and proliferative effects of IL-7 can be mediated through the same receptor on various lineages. CD4⁺ memory T cells express high level of IL-7R Subsets that express it generally require it, including progenitors of T and B cells, naïve and memory T cells.

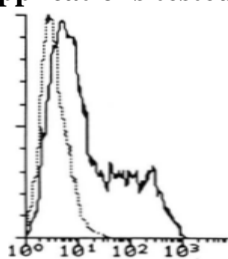
(Pandrau-Garcia D et al, 1994, Blood, 83, 3613-9 ; Mazzucchelli R et al, Nat. Review Immunol., 2007,7, 144-54)

Clone:	R34-34
Species:	mouse
Specificity:	human IL7-R α
Immunogen:	human leukemic pre-B cells
Species cross- reactivity:	nd
Isotype:	IgG1
Formulation/size:	Purified: 100 μ g in 200 μ l / 50 μ g in 100 μ l Tris-NaCl pH 8 Coupled: 100 μ g in 200 μ l / 50 μ g in 100 μ l PBS 50% glycerol

Available formats:

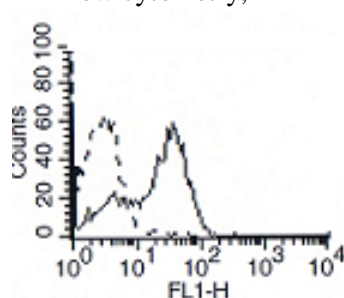
Reference N°		Format	Application tested
50 μ g	100 μ g		
DDX0700P-50	DDX0700P-100	Purified	Surface Flow cytometry, IL7- binding inhibition, IP
DDX0700A488-50	DDX0700A488-100	Alexa-fluor® 488	Surface Flow cytometry
DDX0700A546-50	DDX0700A546-100	Alexa- fluor® 546	IF
DDX0700A647-50	DDX0700A647-100	Alexa- fluor® 647	Surface Flow cytometry

Applications tested



Facs staining of R34-34-transfected Cos7 cells

Flow cytometry, IP



Facs staining of PBL with R34-34

97KDa

67KDa



Immunoprecipitation of R34-34 antigen from ¹²⁵I-surface labelled Pre-Alp cells

Usage recommendation:

- *This monoclonal antibody may be used between 5-20 μ g/ml
- *Optimal dilution should be determined by each laboratory for each application
- *Coupled antibody: to maintain RT before using

Aliquot storage conditions

- 20°C. KEEP CONTENTS STERILE: no preservative.**
- Purified antibodies: avoid repeated freeze/thaw cycles.**
- Coupled antibodies: glycerol protects from freezing.**

Not for use in Humans. For research purpose only