

# Monoclonal Anti-mouse, human, rat, swine Langerin/CD207

**Product reference: DDX0362**

## Description

Langerin/CD207 is a transmembrane C-type lectin receptor (CLR) of epidermal and mucosal Langerhans cells (LCs) that induces Birbeck's granule. Langerin features a single carbohydrate recognition domain (CRD) with mannose-type specificity in its extracellular portion. Langerin expression has not been reported outside the DC system. Human Langerin is involved in the processing of mycobacterial glycolipids leading to antigen presentation to CD1a-restricted T cells. Human Langerin binds the gp120 of HIV. (Valladeau *J et al*, 2002 *J. Immunol*, 168 : 782-792; Douillard *P et al*, 2005 *J Invest Dermatol*, 125: 983-994; Chorro *L. et al*, *J Exp.Med.*, 2010, 206 (13), 3089-3100).

**Clone:** 929F3.01  
**Species:** rat  
**Specificity:** human Langerin  
**Immunogen:** human Langerin-transfected eukaryotic cells  
**Species cross-reactivity:** rat, mouse, swine  
**Isotype:** IgG2a,k  
**Purification:** QMA Hyper D ion exchange chromatography  
**Formulation/size:** **Purified:** 100 µg in 200µl / 50 µg in 100 µl Tris-NaCl pH 8  
**Coupled:** 100 µg in 200µl / 50 µg in 100 µl PBS 50% glycerol

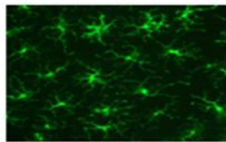
## Available formats:

Reference N°		Format	Application tested
50 µg	100 µg		
DDX0362P-50	DDX0362P-100	Purified	IF, IHC formol-paraffin, Flow cytometry
DDX0362A488-50	DDX0362A488-100	Alexa-fluor® 488	IF, IHC, Flow cytometry
DDX0362A546-50	DDX0362A546-100	Alexa- fluor® 546	IF, IHC, Flow cytometry
DDX0362A647-50	DDX0362A647-100	Alexa- fluor® 647	IF, IHC, Flow cytometry
DDX0362B-50	DDX0362B-100	Biotin ( <i>on request</i> )	IHC, Flow cytometry

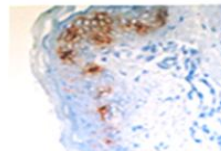
## Other clones available on request

## Applications:

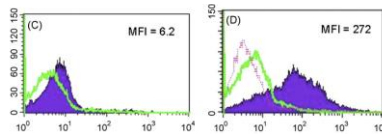
IF, IHC, Flow cytometry



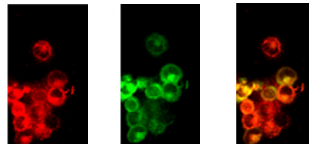
IF on mouse epidermal sheet with 929F3-A488



IHC staining of human skin cryosections with 929F3-HRP



Cells derived from culture of porcine skin stained permeabilized (D) or not (C) with 929F3



IF staining on isolated skin-isolated porcine Langerhans cells

## Usage recommendation:

- \*This monoclonal antibody may be used between 5-20 µg/ml.
- \*Optimal dilution should be determined by each laboratory for each application.
- \*Coupled antibody: to maintain RT before use.

## Aliquot storage conditions:

- 20°C. **KEEP CONTENTS STERILE: no preservative.**
- Purified antibodies:** avoid repeated freeze/thaw cycles.
- Coupled antibodies:** glycerol protects from freezing.

Not for use in Humans. For research only