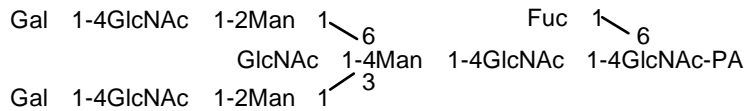


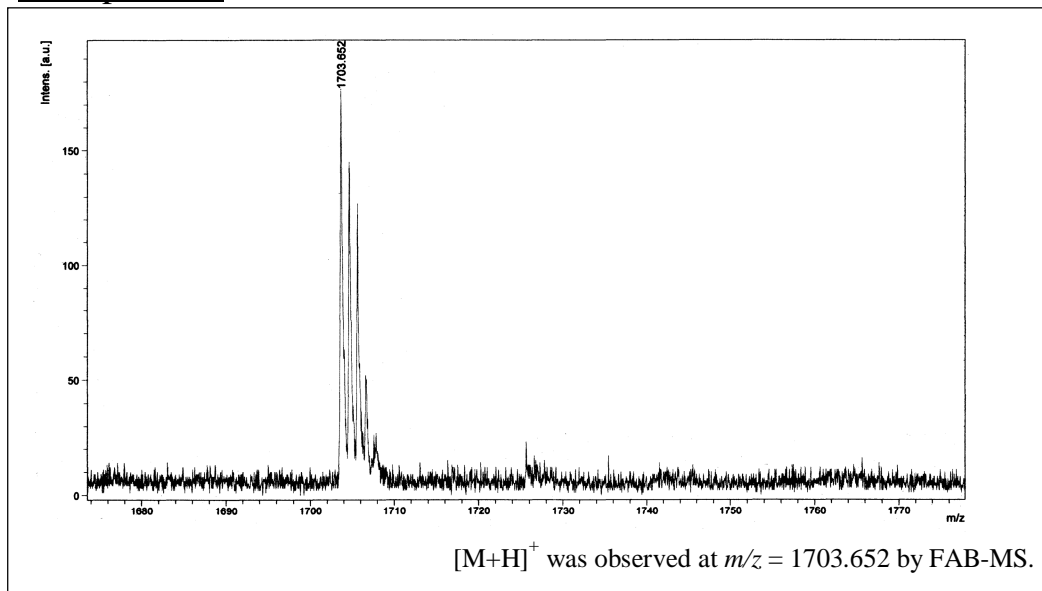
Standard PA-Sugar Chain

< PA-003 >

Lot. No. 20061013



MS Spectrum



Basic Information

1	総量	Size	100 pmol
2	濃度	Cocentration	10 pmol/μL
3	純度	Purity	95 % up (HPLC Area)
4	形状	Form	水溶液 (凍結品) / Aqueous solution (Frozen)
5	保存	Storage	凍結保存 (-20) / in a frozen state (-20)

本標準糖鎖はin vitro研究のみでご使用になれます。
 This standard sugar chain can be used for in vitro research only.



増田化学工業株式会社
 〒760-0065
 香川県高松市朝日町四丁目12番52号
 TEL : 087-851-3107, FAX : 087-851-9749
 URL <http://www.mc-ind.co.jp>

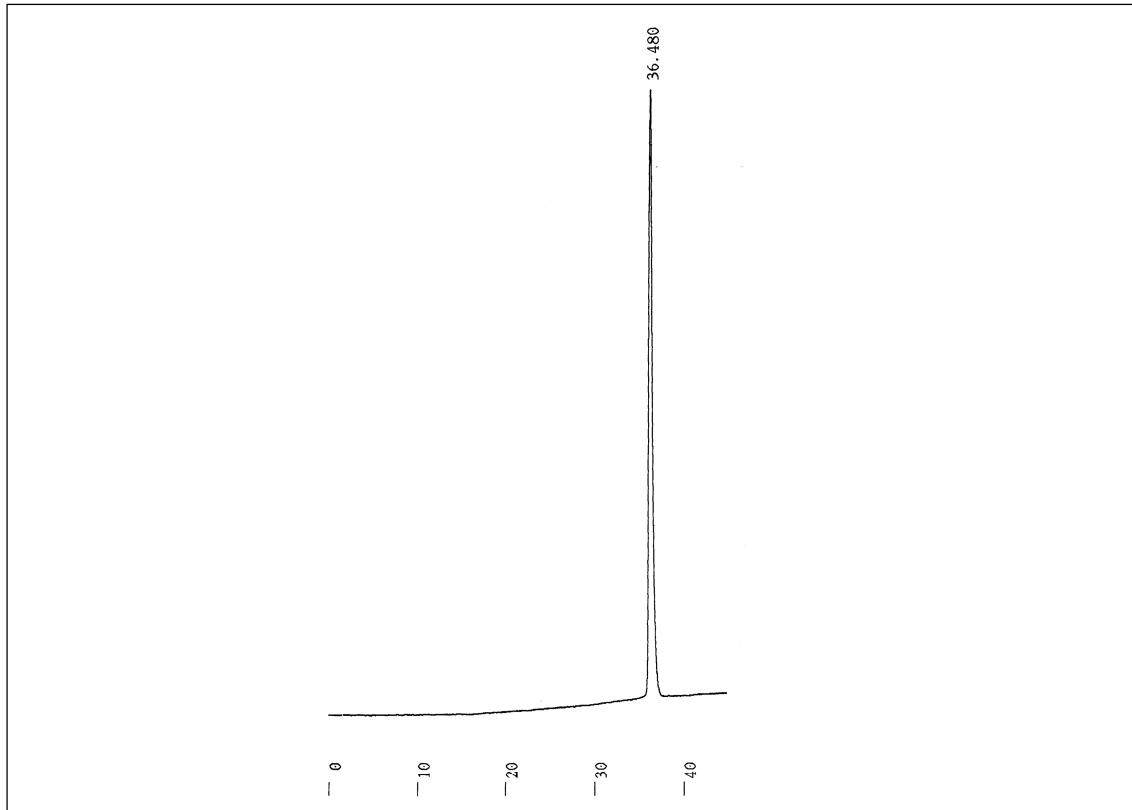
Masuda Chemical Industry Co., LTD.
 4-12-52 Asahimachi, Takamatsu City,
 Kagawa Prefecture 760-0065
 tel : 087-851-3107 fax : 087-851-9749
 URL http://www.mc-ind.co.jp/english_site/index_e.html

Standard PA-Sugar Chain

< PA-003 >

Lot. No. 20061013

HPLC Chart



HPLC Condition

Column : NACALAI Tesque, COSMOSIL Packed Column for HPLC, 5C18-AR-300 (6 * 150 mm)
 Solvent A : 20mM of AcOHaq. -NH3aq. (pH 4.0)
 Solvent B : Solvent A containing 1.0% of n-BuOH.
 Gradient : 3% > 40% B (0 > 45min.)
 Flow Rate : 2.0 mL/min.
 Detection : Fluorescence (Ex: 320nm, Em:400nm)
 Column Temp. : 25°C
 Injection : 21 pmol



増田化学工業株式会社
 〒760-0065
 香川県高松市朝日町四丁目12番52号
 TEL : 087-851-3107, FAX : 087-851-9749
 URL <http://www.mc-ind.co.jp>

Masuda Chemical Industry Co., LTD.
 4-12-52 Asahimachi, Takamatsu City,
 Kagawa Prefecture 760-0065
 tel : 087-851-3107 fax : 087-851-9749
 URL http://www.mc-ind.co.jp/english_site/index_e.html