



**POLYCLONAL ANTIBODY**

*For research use only. Not for clinical diagnosis.*

**Catalog No. CNP- WB-373**

**Anti ZNF253**

<b>Product type</b>	Primary antibodies
<b>Immunogen</b>	ZNF253 (NP_066385.2, 1 a.a. ~ 499 a.a) full-length human protein.
<b>Form</b>	Liquid Protein A purified
<b>Volume</b>	100ul
<b>Specificity</b>	Human
<b>Host</b>	Rabbit

**Immunogen Sequence**  
 MGPLQFRDVAIEFSLEEWHCLDTAQRNLYRDVMLENYRNLVFLGIVVSKPDLVTCLEQGK  
 KPLTMERHEMIAKPPVMSSHFAQDLWPENIQNSFQIGMLRRYEECRHDNLQLKKGCKSVG  
 EHKVHKGGYNGLNQCLTTTQKEIFQCDKYGKVFHKFSNSNTYKTRHTGINLFKCIICGKA  
 FKRSTLTTHKKIHTGEKPYRCEECGKAFNQSANLTTHKRIHTGEKPYRCEECGKAFKQS  
 SNLTTHKKIHTGEKPYKCEECGKAFNRSTDLTTHKIVHTGEKPYKCEECGKAFKHPHSHVT  
 THKKIHTRGKPYNCEECGKSFKHCNLTTHKRIHTGEKPYKCEECGKAFHLSSHLTTHKI  
 LHTGEKPYRCRECGKAFNHSTTLFSHEKIHTGEKPYKCEECGKTFTWPSILSKHKRTHTG  
 EKPYKCEECGKSFTASSTLTTHKRIHTGEKPYKCEECGKAFNWSSDLNKHKKIHIERPYPY  
 IVKNVTDLLNVPPLLSIR

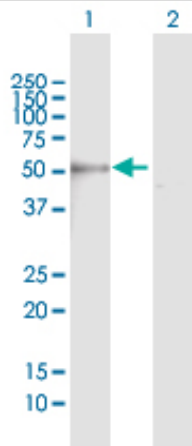
BMZF-1, BMZF1, FLJ90391, ZNF411

**Application notes**

**WB**

Antibody dilution: 1:1000 ~ 1:2000. Specific band of ~57.60 kDa using ZNF253 transfected 293T lysate

**Western Blotting (Transfected lysate)**



Western Blot analysis of ZNF253 expression in transfected 293T cell line by ZNF253 rabbit polyclonal antibody.

Lane 1: ZNF253 transfected lysate(57.60 KDa).

Lane 2: Non-transfected lysate.

**Storage**

For continuous use, store at 2-8°C for one-two days. For extended storage, store in -20°C freezer. Working dilution samples should be discarded if not used within 12 hours.

*For research use only. Not for clinical diagnosis.*



**COSMO BIO Co., LTD.**

Inspiration for Life Science

TOYO 2CHOME, KOTO-KU, TOKYO, 135-0016, JAPAN

URL: <http://www.cosmobio.co.jp> e-mail: [export@cosmobio.co.jp](mailto:export@cosmobio.co.jp)

[Outside Japan] Phone : +81-3-5632-9617 [国内連絡先] Phone : +81-3-5632-9610

FAX : +81-3-5632-9618

FAX : +81-3-5632-9619