



POLYCLONAL ANTIBODY

For research use only. Not for clinical diagnosis.

Catalog No. CNP- WB-236

Anti PPT1

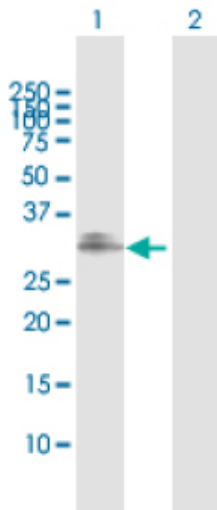
Product type Primary antibodies
Immunogen PPT1 (NP_000301.1, 1 a.a. ~ 306 a.a) full-length human protein.
Form Liquid
Protein A purified
Volume 100ul
Specificity Human
Host Rabbit

Immunogen Sequence MASPGCLWLLAVALLPWTCASRALQHLDPPAPLPLVIWHGMGDSCCNPLSMGAIKKMVEK
KIPGIYVLSLEIGKTLMEDVENSFFLNVNSQVTTVCQALAKDPKLQQGYNAMGFSQGGQF
LRAVAQRCPSPPMINLISVGGQHGGVFGLPRCPGESSHICDFIRKTLNAGAYSKVVQERL
VQAEYWHDPIKEDVYRNHSIFLADINQERGINESYKKNLMALKKFVMVKFLNDSIVDPVD
SEWFGFYRSGQAKETIPLQETSLYTQDRLGLKEMDNAGQLVFLATEGDHLQLSEEWFYAH
IIPFLG

Gene Alias PPT1 (NP_000301.1, 1 a.a. ~ 306 a.a) full-length human protein.

Application notes **WB**
Antibody dilution: 1:1000 ~ 1:2000. Specific band of ~34.20 kDa using PPT1 transfected 293T lysate.

Western Blotting (Transfected lysate)



Western Blot analysis of PPT1 expression in transfected 293T cell line by PPT1 rabbit polyclonal antibody.

Lane 1: PPT1 transfected lysate(34.20 KDa).

Lane 2: Non-transfected lysate.

Storage

For continuous use, store at 2-8°C for one-two days. For extended storage, store in -20°C freezer. Working dilution samples should be discarded if not used within 12 hours.

For research use only. Not for clinical diagnosis.



COSMO BIO Co., LTD.

Inspiration for Life Science

TOYO 2CHOME, KOTO-KU, TOKYO, 135-0016, JAPAN

URL: <http://www.cosmobio.co.jp>

e-mail: export@cosmobio.co.jp

[Outside Japan] Phone : +81-3-5632-9617

[国内連絡先] Phone : +81-3-5632-9610

FAX : +81-3-5632-9618

FAX : +81-3-5632-9619