



POLYCLONAL ANTIBODY

For research use only. Not for clinical diagnosis.

Catalog No. CNP- WB-137

Anti PYCR2

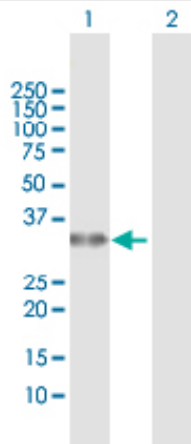
Product type	Primary antibodies
Immunogen	PYCR2 (NP_037460.2, 1 a.a. ~ 320 a.a) full-length human protein.
Form	Liquid Protein A purified
Volume	100ul
Specificity	Human
Host	Rabbit

Immunogen Sequence
MSVGFAGQLAYALARGFTAAGILSAHKIIASSPEMNLPTVSALRKMGNLTRSNETV
KHSDVLFVAVKPHIIPFILDEIGADVQARHIVVSCAAGVTISSVEKKLMAFQPAPKVIRC
MTNTPVVVQEGATVYATGTHALVEDGQLEQLMSSVGFCTEVEEDLIDAVTGLSGSGPAY
AFMALDALADGGVCKMGLPRRLAIQLGAQALLGAAKMLLDSEQHPCQLKDNVCSPPGATIH
ALHFLESGGFRSLINAVEASCIRTRELQSMADQEKISPAALKKTLTLLDRVKLESPTVSTL
TPSSPGKLLTRSLALGGKKD

Gene Alias P5CR2

Application notes **WB**
Antibody dilution: 1:1000 ~ 1:2000. Specific band of ~33.60 kDa using PYCR2 transfected 293T lysate...

Western Blotting (Transfected lysate)

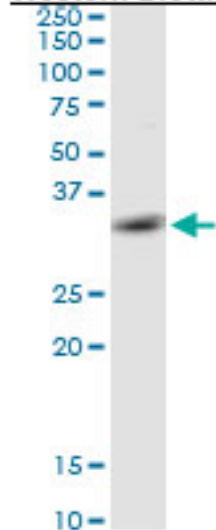


Western Blot analysis of PYCR2 expression in transfected 293T cell line by PYCR2 rabbit polyclonal antibody.

Lane 1: PYCR2 transfected lysate(33.60 KDa).
Lane 2: Non-transfected lysate.

Antibody dilution: 1:1000. Western Blot analysis of PYCR2 expression in HeLa (Predicted Mw: 33.6370 kDa).

Western Blotting (Cell lysate)



PYCR2 rabbit polyclonal antibody. Western Blot analysis of PYCR2 expression in HeLa.

Storage

For continuous use, store at 2-8°C for one-two days. For extended storage, store in -20°C freezer. Working dilution samples should be discarded if not used within 12 hours.

For research use only. Not for clinical diagnosis.



COSMO BIO Co., LTD.

Inspiration for Life Science

TOYO 2CHOME, KOTO-KU, TOKYO, 135-0016, JAPAN

URL: <http://www.cosmobio.co.jp>

e-mail: export@cosmobio.co.jp

[Outside Japan] Phone : +81-3-5632-9617

[国内連絡先] Phone : +81-3-5632-9610

FAX : +81-3-5632-9618

FAX : +81-3-5632-9619