



POLYCLONAL ANTIBODY

For research use only. Not for clinical diagnosis.

Catalog No. CNP-SLC16A1-162

Anti SLC16A1

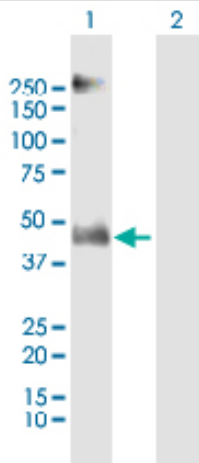
Product type	Primary antibodies
Immunogen	SLC16A1 (P53985, 1 a.a. ~ 500 a.a) full-length human protein.
Form	Liquid Protein A purified
Volume	100ul
Specificity	Human
Host	Rabbit

Immunogen Sequence
MPPAVGGPVG YTPPDGGWGWAVVIGAFISIGFSYAFPKSITVFFKEIEGIFHATTSEVSW
ISSIMLAVMYGGGPISSILVNKYGSRIVMIVGGCLSGCGLIAASFCNTVQQLYVCIGVIG
GLGLAFNLNPALTMIGKYFYKRRPLANGLAMAGSPVFLCTLAPLNQVFFGIFGWRGSFLI
LGGLLLNCCVAGALMRPIGPKPTKAGKDKSKASLEKAGKSGVKKDLHDANTDLIGRHPKQ
EKRSVFQTIHQFLDLTLFTHRGFLLYLSGNVIMFFGLFAPLVFLSSYGKSQLHYSSEKSAF
LLSILAFVDMVARPSMGLVANTKPIRPRIQYFFAASVVANGVCHMLAPLSTTYVGFCVYA
GFFGFAGWLSSVLFETLMDLVGPQRFS SAVGLVTIVECCPVLLGPPLLGR LNDMYGDYK
YTYWACGVVLIISGIYLFIMGINYRLLAKEQKANEQKESKEEETSIDVAGKPNEVTKA
AESPQKQDTEGGPKEEESPV

Gene Alias FLJ36745, HHF7, MCT, MCT1, MGC44475

Application notes **WB**
Antibody dilution: 1:1000 ~ 1:2000. Specific band of ~54.00 kDa using SLC16A1 transfected 293T lysate.

Western Blotting (Transfected lysate)



Western Blot analysis of SLC16A1 expression in transfected 293T cell line by SLC16A1 rabbit polyclonal antibody.

Lane 1: SLC16A1 transfected lysate(54.00 KDa).

Lane 2: Non-transfected lysate.

Storage

For continuous use, store at 2-8°C for one-two days. For extended storage, store in -20°C freezer. Working dilution samples should be discarded if not used within 12 hours.

For research use only. Not for clinical diagnosis.



COSMO BIO Co., LTD.

Inspiration for Life Science

TOYO 2CHOME, KOTO-KU, TOKYO, 135-0016, JAPAN

URL: <http://www.cosmobio.co.jp>

e-mail: export@cosmobio.co.jp

[Outside Japan] Phone : +81-3-5632-9617

[国内連絡先] Phone : +81-3-5632-9610

FAX : +81-3-5632-9618

FAX : +81-3-5632-9619