



**POLYCLONAL ANTIBODY**

*For research use only. Not for clinical diagnosis.*

**Catalog No. CNP-PPAP2A-030**

# Anti PPAP2A

<b>Product type</b>	Primary antibodies
<b>Immunogen</b>	PPAP2A (NP_003702.2, 1 a.a. ~ 284 a.a) full-length human protein.
<b>Form</b>	Liquid Protein A purified
<b>Volume</b>	100ul
<b>Specificity</b>	Human
<b>Host</b>	Rabbit

**Immunogen Sequence**

MFDKTRLPYVALDVLCVLLAGLPFAILTSRHTPFQRGVFCNDESIKYPYKEDTIPYALLG  
GIIIPFSIIVILGETLSVYCNLLHSNSFIRNNYIATIIYKAIGTFLFGAAASQSLTDIAK  
YSIGRLRPHFLDVCDPDWSKINCSDGYIEYYICRGNAERVKEGRLSFYSGHSSFSMYCML  
FVALYLQARMKGDWARLLRPTLQFGLVAVSIYVGLSRVSDYKHHWSDVLTGLIQGALVAI  
LVAVYVSDFFKERTSFKERKEEDSHTTLHETPTTGNHYPSNHQP

**Gene Alias**

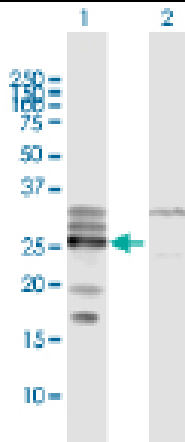
LLP1a, LPP1, PAP-2a, PAP2, PAP2a2, PAP2alpha2, PAPalpha1

**Application notes**

**WB**

Antibody dilution: 1:1000 ~ 1:2000. Specific band of ~32.20 kDa using PPAP2A transfected 293T lysate.

**Western Blotting (Transfected lysate)**



Western Blot analysis of PPAP2A expression in transfected 293T cell line by PPAP2A rabbit polyclonal antibody.

Lane 1: PPAP2A transfected lysate(32.20 kDa).

Lane 2: Non-transfected lysate.

Antibody dilution: 1:1000. Western Blot analysis of PPAP2A expression in K-562 (Predicted Mw:32.1560 kDa).

**Western Blotting (Cell lysate)**



PPAP2A rabbit polyclonal antibody. Western Blot analysis of PPAP2A expression in K-562.

**Storage**

For continuous use, store at 2-8°C for one-two days. For extended storage, store in -20°C freezer. Working dilution samples should be discarded if not used within 12 hours.

*For research use only. Not for clinical diagnosis.*



**COSMO BIO Co., LTD.**

Inspiration for Life Science

TOYO 2CHOME, KOTO-KU, TOKYO, 135-0016, JAPAN

URL: <http://www.cosmobio.co.jp>

e-mail: [export@cosmobio.co.jp](mailto:export@cosmobio.co.jp)

[Outside Japan] Phone : +81-3-5632-9617

[国内連絡先] Phone : +81-3-5632-9610

FAX : +81-3-5632-9618

FAX : +81-3-5632-9619