



**POLYCLONAL ANTIBODY**

*For research use only. Not for clinical diagnosis.*

**Catalog No. CNP-MCM9-349**

**Anti MCM9**

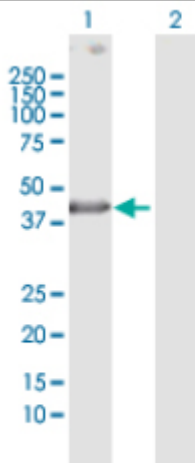
<b>Product type</b>	Primary antibodies
<b>Immunogen</b>	MCM9 (NP_694987.1, 1 a.a. ~ 391 a.a) full-length human protein.
<b>Form</b>	Liquid Protein A purified
<b>Volume</b>	100ul
<b>Specificity</b>	Human
<b>Host</b>	Rabbit

**Immunogen Sequence**  
MNSDQVTLVGQVFESYVSEYHKNDILLILKERDEDAHYPVVVNAMTLFETNMEIGEYFNM  
FPSEVLTIFDSALRRSALTILQSLSQPEAVSMKQNLHARISGLPVCPELVREHIPKTKDV  
GHFLSVTGTVIRTSLVKVLEFERDYMCNKCKHVFIKADFEQYYTFCRPSSCPSLESCDS  
SKFTCLSGLSSSPTRCRDYQEIKIQEQVQRLSVGSIIPRSMKVILEDDLVDSCKSGDDLT  
YGVIMQRWKPFQQDVRCEVEIVLKANYIQVNNEQSSGIIMDEEVQKEFEDFWEYYKSDPF  
AGRNVLASLCPQVFGMYLVKLAVAMVLAGGIQRDATGTRVRGESHLLLVGDPGTGKSQ  
FLKYAAKITPRSVLTTGIGSTSAGIVCDNFK

**Gene Alias** C6orf61, FLJ13942, FLJ20170, FLJ56845, MCMDC1, MGC35304, dJ3,29L24.1, dJ329L24.3

**Application notes** **WB**  
Antibody dilution: 1:1000 ~ 1:2000. Specific band of ~44.00 kDa using MCM9 transfected 293T lysate.

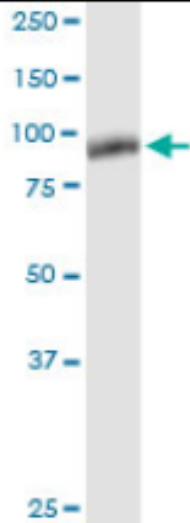
Western Blotting (Transfected lysate)



Western Blot analysis of MCM9 expression in transfected 293T cell line by MCM9 rabbit polyclonal antibody.

Lane 1: MCM9 transfected lysate(44.00 KDa).  
Lane 2: Non-transfected lysate.

**Western Blotting (Tissue lysate)**



MCM9 rabbit polyclonal antibody. Western Blot analysis of MCM9 expression in rat brain.

**Storage**

For continuous use, store at 2-8°C for one-two days. For extended storage, store in -20°C freezer. Working dilution samples should be discarded if not used within 12 hours.

*For research use only. Not for clinical diagnosis.*



**COSMO BIO Co., LTD.**

Inspiration for Life Science

TOYO 2CHOME, KOTO-KU, TOKYO, 135-0016, JAPAN

URL: <http://www.cosmobio.co.jp>

e-mail: [export@cosmobio.co.jp](mailto:export@cosmobio.co.jp)

[Outside Japan] Phone : +81-3-5632-9617

[国内連絡先] Phone : +81-3-5632-9610

FAX : +81-3-5632-9618

FAX : +81-3-5632-9619