



POLYCLONAL ANTIBODY

For research use only. Not for clinical diagnosis.

Catalog No. CNP-IDH1-381

Anti IDH1

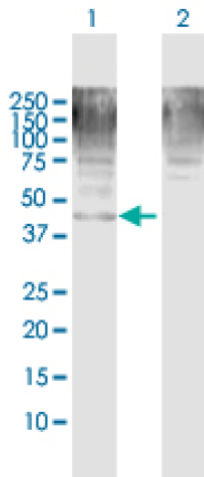
Product type	Primary antibodies
Immunogen	IDH1 (NP_005887.2, 1 a.a. ~ 414 a.a) full-length human protein.
Form	Liquid Protein A purified
Volume	100ul
Specificity	Human
Host	Rabbit

Immunogen Sequence
MSKKISGGSVVEMQGDDEMTRIIWELIKEKLIFPYVELDLHSYDLGIENRDATNDQVTKDA
AEAIAKKHNVGKCATITPDEKRVEEFKLKQMWKSPNGTIRNILGGTVFREAIICKNIPRL
VSGWVKPIIIGRHAYGDQYRATDFVVPGPVKVEITYTPSDGTQKVTYLVHNFEEGGGVAM
GMYNQDKSIEDFAHSSFQMALSKGWPLYLSTKNTILKKYDGRFKDIFQEIYDKQYKSQFE
AQKIWYEHRLIDDMVAQAMKSEGGFIWACKNYDGDVQSDSVAQGYGSLGMMTSVLVCPDG
KTVEAAEAHGTVTRHYRMYQKGQETSTNPIASIFAWTRGLAHRKLDNNKELAFFANALE
EVSITIEAGFMTKDLAACIKGLPNVQRSYDLNTFEFMDKLGKLNKIKLAQAKL

IDCD, IDH, IDP, IDPC, PICD

Application notes **WB**
Antibody dilution: 1:1000 ~ 1:2000. Specific band of ~46.70 kDa using IDH1 transfected 293T lysate

Western Blotting (Transfected lysate)

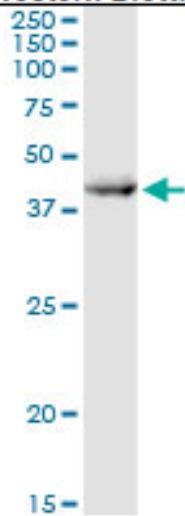


Western Blot analysis of IDH1 expression in transfected 293T cell line by IDH1 rabbit polyclonal antibody.

Lane 1: IDH1 transfected lysate(46.70 KDa).
Lane 2: Non-transfected lysate.

Antibody dilution: 1:1000. Western Blot analysis of IDH1 expression in human kidney (Predicted Mw: 46.5680 kDa).

Western Blotting (Tissue lysate)



IDH1 rabbit polyclonal antibody. Western Blot analysis of IDH1 expression in human kidney.

Storage

For continuous use, store at 2-8°C for one-two days. For extended storage, store in -20°C freezer. Working dilution samples should be discarded if not used within 12 hours.

For research use only. Not for clinical diagnosis.



COSMO BIO Co., LTD.

Inspiration for Life Science

TOYO 2CHOME, KOTO-KU, TOKYO, 135-0016, JAPAN

URL: <http://www.cosmobio.co.jp>

e-mail: export@cosmobio.co.jp

[Outside Japan] Phone : +81-3-5632-9617

[国内連絡先] Phone : +81-3-5632-9610

FAX : +81-3-5632-9618

FAX : +81-3-5632-9619