



POLYCLONAL ANTIBODY

For research use only. Not for clinical diagnosis.

Catalog No. CNP-CYP4V2-354

Anti CYP4V2

Product type	Primary antibodies
Immunogen	CYP4V2 (NP_997235.2, 1 a.a. ~ 525 a.a) full-length human protein.
Form	Liquid Protein A purified
Volume	100ul
Specificity	Human
Host	Rabbit

Immunogen Sequence
MAGLWLGLVWQKLLWGAASALSLAGASLVLSLLQRVASYARKWQQMRPIPTVARAYPLV
GHALLMKPDGREFFQIIIEYTEEYRHMPDLLKLVGPVPMVALYNAENVEVILTSSKQIDK
SSMYKFLEPWGLGLLLTSTGNKWRSRKMLTPTFHFTILEDFLDIMNEQANILVKKLEKH
INQEAFNCFYITLCAIDIICETAMGKNIGAQSNDSEYVRAVYRMSEMIFRRIKMPWLW
LDLWYLMFKEGWEHKKSLKILHTFTNSVIAERANEMNANEDCRGDGRGSAPSKNKRR AFL
DLLSVTDDEGNRLSHEDIREEVDTFMFEGHDTTAAAINWSLYLLGSNPEVQKKVDHELD
DVFGKSDRPATVEDLKKLRYLECVIKETLRLFPSVPLFARSVSEDCEVAGYRVLKGTEAV
IIPYALHRDPRYFPNPEEFQPERFFPENAQGRHPYAYV PFSAGPRNCIGQKFAVMEEKTI
LSCILRHFWIESNQKREELGLEGLILRPSNGIWIWIKLRNADER

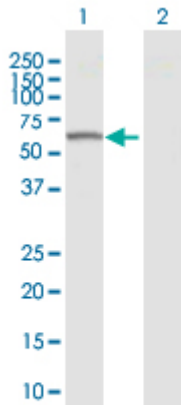
BCD, CYP4AH1, FLJ18432, MGC43534

Application notes

WB

Antibody dilution: 1:1000 ~ 1:2000. Specific band of ~60.70 kDa using CYP4V2 transfected 293T lysate.

Western Blotting (Transfected lysate)

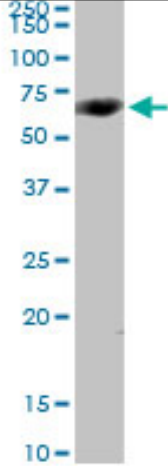


Western Blot analysis of CYP4V2 expression in transfected 293T cell line by CYP4V2 rabbit polyclonal antibody.

Lane 1: CYP4V2 transfected lysate(60.70 KDa).
Lane 2: Non-transfected lysate.

Antibody dilution: 1:1000. Western Blot analysis of CYP4V2 expression in human kidney (Predicted Mw: 60.9390 kDa).

Western Blotting (Tissue lysate)



CYP4V2 rabbit polyclonal antibody. Western Blot analysis of CYP4V2 expression in human kidney.

Storage

For continuous use, store at 2-8°C for one-two days. For extended storage, store in -20°C freezer. Working dilution samples should be discarded if not used within 12 hours.

For research use only. Not for clinical diagnosis.



COSMO BIO Co., LTD.

Inspiration for Life Science

TOYO 2CHOME, KOTO-KU, TOKYO, 135-0016, JAPAN

URL: <http://www.cosmobio.co.jp>

e-mail: export@cosmobio.co.jp

[Outside Japan] Phone : +81-3-5632-9617

[国内連絡先] Phone : +81-3-5632-9610

FAX : +81-3-5632-9618

FAX : +81-3-5632-9619