



POLYCLONAL ANTIBODY

For research use only. Not for clinical diagnosis.

Catalog No. CNP-CDC25C-471

Anti CDC25C

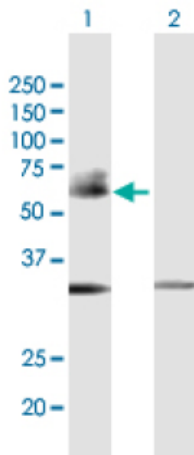
Product type	Primary antibodies
Immunogen	CDC25C (AAH19089.1, 1 a.a. ~ 473 a.a) full-length human protein.
Form	Liquid Protein A purified
Volume	100ul
Specificity	Human
Host	Rabbit

Immunogen Sequence
MSTELFSSTREEGSSGSGPSFRSNQRKMLNLLERDTSFTVCPDVPRTVPVGKFLGDSANL
SILSGGTPKCCLDLSNLSSGEITATQLTTSADLDETGHLDSSGLQEVHLAGMNHdqHLMK
CSPAQLLCSTPNGLDRGHRKRDAMCSSSANKENDNGNLVDSEMKYLGSPITTVPKLDKNP
NLGEDQAEIISDELMEFSLKDQEAQVSRSGLYRSPSPENLNRPRLKQVEKFDNTIPDK
VKKKYFSGQGKLRKGLCLKKTVSLCDITITQMLEEDSNQGHIGDFSKVCALPTVSGKHQ
DLKYVNPETVAALLSGKFQGLIEKFYVIDCRYPYEYLGGHIIQGALNLYSQEELFNFFLKK
PIVPLDTQKRIIVFHCFSSERGP RMCRCLEEDRSLNQYPALYP ELYLKGGYRDF
PEYME LCEPQSYCPMHHQDHKTELLRCRSQSKVQEGERQLREQIALLVKDMSP

Gene Alias CDC25

Application notes **WB**
Antibody dilution: 1:1000 ~ 1:2000. Specific band of ~52.03 kDa using CDC25C transfected 293T lysate.

Western Blotting (Transfected lysate)



Western Blot analysis of CDC25C expression in transfected 293T cell line by CDC25C rabbit polyclonal antibody.

Lane 1: CDC25C transfected lysate(52.03 KDa).
Lane 2: Non-transfected lysate.

Storage

For continuous use, store at 2-8°C for one-two days. For extended storage, store in -20°C freezer. Working dilution samples should be discarded if not used within 12 hours.

For research use only. Not for clinical diagnosis.



COSMO BIO Co., LTD.

Inspiration for Life Science

TOYO 2CHOME, KOTO-KU, TOKYO, 135-0016, JAPAN

URL: <http://www.cosmobio.co.jp>

e-mail: export@cosmobio.co.jp

[Outside Japan] Phone : +81-3-5632-9617

[国内連絡先] Phone : +81-3-5632-9610

FAX : +81-3-5632-9618

FAX : +81-3-5632-9619