



POLYCLONAL ANTIBODY

For research use only. Not for clinical diagnosis.

Catalog No. CNP-APEX1-468

Anti APEX1

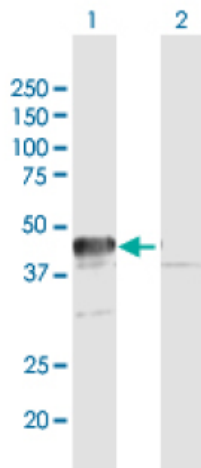
Product type	Primary antibodies
Immunogen	APEX1 (NP_001632.1, 1 a.a. ~ 318 a.a) full-length human protein.
Form	Liquid Protein A purified
Volume	100ul
Specificity	Human
Host	Rabbit

Immunogen Sequence
MPKRGKKGAVAEDGDELRTPEAKKSKTAAKKNNDKEAAGEGPALYEDPPDHKTSPSGKPA
TLKICSWNVDGLRAWIKKKGLDWVKEEAPDILCLQETKCSENKLPaelQELPGLSHQYWS
APSDKEGYSGVGLLSRQCPLKVSYGIGDEEHDQEGRVIVAEFDSFVLVTAYVVPNAGRGLV
RLEYRQRWDEAFRKFLLKGLASRKPLVLCGDLNVAHEEIDLRNPKGNKKNAGFTPQERQGF
GELLQAVPLADSFRLHYPNTPYAYTFWTYMMNARSKNVGWRLDYFLLSHSLLPALCDSKI
RSKALGSDHCPITLYLAL

Gene Alias APE, APE-1, APE1, APEN, APEX, APX, HAP1, REF-1, REF1

Application notes **WB**
Antibody dilution: 1:1000 ~ 1:2000. Specific band of ~34.98 kDa using APEX1 transfected 293T lysate.

Western Blotting (Transfected lysate)



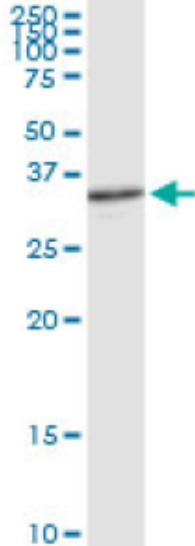
Western Blot analysis of APEX1 expression in transfected 293T cell line by APEX1 rabbit polyclonal antibody.

Lane 1: APEX1 transfected lysate(34.98 KDa).

Lane 2: Non-transfected lysate.

Antibody dilution: 1:1000. Western Blot analysis of APEX1 expression in K-562 (Predicted Mw: 35.5550 kDa).

Western Blotting (Cell lysate)

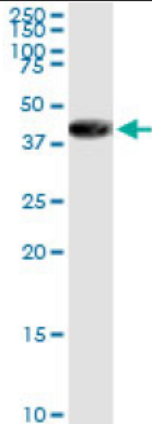


APEX1 rabbit polyclonal antibody. Western Blot analysis of APEX1 expression in K-562.

IP

Antibody dilution 1:15 ~ 1:60 for immunoprecipitation of APEX1 transfected lysate

Immunoprecipitation



Immunoprecipitation of APEX1 transfected lysate using APEX1 rabbit polyclonal antibody and Protein A Magnetic Bead, and immunoblotted with APEX1 purified mouse polyclonal antibody.

Storage

For continuous use, store at 2-8°C for one-two days. For extended storage, store in -20°C freezer. Working dilution samples should be discarded if not used within 12 hours.

For research use only. Not for clinical diagnosis.



COSMO BIO Co., LTD.

Inspiration for Life Science

TOYO 2CHOME, KOTO-KU, TOKYO, 135-0016, JAPAN

URL: <http://www.cosmobio.co.jp>

e-mail: export@cosmobio.co.jp

[Outside Japan] Phone : +81-3-5632-9617

[国内連絡先] Phone : +81-3-5632-9610

FAX : +81-3-5632-9618

FAX : +81-3-5632-9619