



POLYCLONAL ANTIBODY

Catalog No. CB-SOD1RB

# Human Cellular Cu/Zn Superoxide Dismutase (SOD1)

<b>Product type</b>	Primary antibodies
<b>Host</b>	Rabbit
<b>Source</b>	Serum
<b>Form</b>	Lyophilized powder filtered lyophilized serum containing 0.02%
<b>Volume (Concentration)</b>	0.2 mL
<b>Specificity</b>	Human cellular Cu/Zn Superoxide Dismutase.
<b>Antigen</b>	A peptide (hekaddlgkkgneestktg) of human cellular Cu/Zn Superoxide Dismutase (SOD1), conjugated to diphtheria toxin.
<b>Isotype</b>	IgG

**Application notes** IHC(f), IHC(p), IF, WB, ELISA, Light microscopy

**Recommended use**

Immunohistochemistry on frozen or wax embedded tissue. Antigen retrieval has been used in characterisation but may not be necessary.

**Recommended dilutions**

Light microscopy 1/100 to 1/500 depending on tissue and detection method;

Immunohistochemistry 1/100

Immunofluorescence 1/10 to 1/100;

Western blotting, 1/1000-1/4000 depending on detection method.

ELISA, 1/1000 - 1/4000.

Optimal dilutions/concentrations should be determined by the end user.

**Staining Pattern**

This antibody labels neurons and some glial cells in human brain tissue. (other tissues not tested). On Western blotting of human brain proteins under reducing conditions a protein of 18kD (the MW of SOD1) is clearly labelled.

**Cross reactivity**

Human

**Storage**

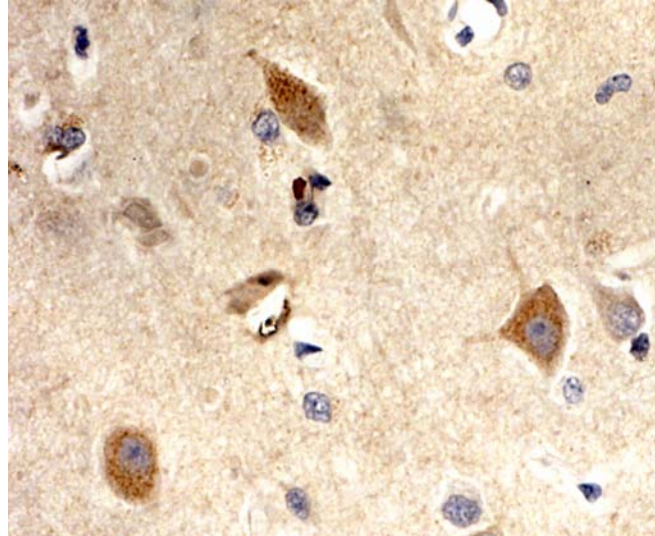
Reconstitute with 0.2ml of sterile distilled water. Re-aliquot into smaller volumes and freeze at -20°C or lower. Store working volume at 4°C. Avoid freeze thawing.

**References**

*For research use only. Not for clinical diagnosis.*

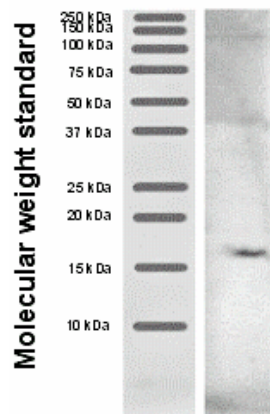


A



**Image A** - Immunohistochemistry using Dab substrate showing staining of paraffin embedded human brain tissue. Primary antibody SOD1RA (1/100) overnight, secondary antibody biotinylated goat anti-rabbit (1/3000), Vector ABC.

B



**Image B** - Western blot of magnetic bead immunoprecipitation of SOD1 from human brain tissue. Primary antibody SOD1RA (1/1000) overnight at 4°C followed by Sigma goat anti-rabbit alkaline phosphatase antibodies (1/10,000)(Sigma) for 1hr and visualised using ECF substrate and a Typhoon 9400 Variable Mode Imager.

I



COSMO BIO Co., LTD.

Inspiration for Life Science

TOYO 2CHOME, KOTO-KU, TOKYO, 135-0016, JAPAN

URL: <http://www.cosmobio.co.jp>

e-mail: [export@cosmobio.co.jp](mailto:export@cosmobio.co.jp)

[Outside Japan] Phone : +81-3-5632-9617

[国内連絡先] Phone : +81-3-5632-9610

FAX : +81-3-5632-9618

FAX : +81-3-5632-9619