



Category: Monoclonal Antibodies
Product Name: Mouse Monoclonal Antibody to WIF1

Catalog Number: MAB-606030111

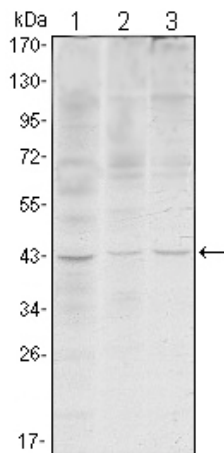


Figure 1: Western blot analysis using WIF1 mouse mAb against HeLa (1), NIH/3T3 (2) and NTERA-2 (3) cell lysate.

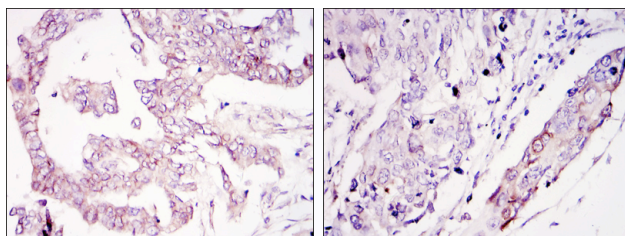


Figure 2: Immunohistochemical analysis of paraffin-embedded ovary tumour tissues (left) and lung cancer (right) using WIF1 mouse mAb with DAB staining.

Lot#:
Clone#: 1G5
Host and isotype: Mouse IgG1
Size: 0.1ml
MW: 42kDa
Aliases: WIF-1; WIF
Entrez Gene: 11197
Species reactivity: Human

Description The protein encoded by this gene functions to inhibit WNT proteins, which are extracellular signaling molecules that play a role in embryonic development. This protein contains a WNT inhibitory factor (WIF) domain and five epidermal growth factor (EGF)-like domains, and is thought to be involved in mesoderm segmentation. This gene functions as a tumor suppressor gene, and has been found to be epigenetically silenced in various cancers.

Immunogen Purified recombinant fragment of human WIF1 expressed in E. Coli.

Application Western Blotting: 1/500 - 1/2000.
Immunohistochemistry: 1/200 - 1/1000.
Immunofluorescence: 1/200 - 1/1000.
ELISA: Propose dilution 1/10000.
Not yet tested in other applications.
Determining optimal working dilutions by titration test.

Formulation Ascitic fluid containing 0.03% sodium azide.

Storage Store at 4iæ, for long term storage, store at -20iæ.

Rrelated product References

1. BMC Cancer. 2009 Jul 1;9:217.
2. Cancer Res. 2009 Nov 15;69(22):8603-10.

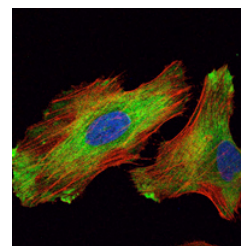


Figure 3: Immunofluorescence analysis of HeLa cells using WIF1 mouse mAb (green). Red: Actin filaments have been labeled with Alexa Fluor-555 phalloidin.

For Research Use Only

Contact: Antagene, Inc. | Tel: 1 (866) 964-2589 | Fax: 1 (888) 225-1868 | Email: Info@antageneinc.com