

PERFORMANCE DATA SHEET

0742

Monoclonal anti-human CD1a*

mAb name/Clone: CB-T6

Isotype: Mouse IgG1 κ

Immunogen: Human Jurkat tumor cells

CATALOG#: 145-020

QUANTITY: 100 μ g

CONCENTRATION: 1.0 mg/ml

INFORMATION: The human CD1 genetic locus consists of five closely related genes (1). Three of the gene products (CD1a, CD1b and CD1c) have been officially clustered using antibodies and are expressed on cortical thymocytes, a subset of B cells, and on most professional antigen presenting cells (2). CD1 molecules have a specialized lipid antigen-presenting function (3,4) and it is unlikely that they present conventional peptide antigens. CD1a is an important marker to help identify developmental pathways of dendritic cells (5).

References: (1) Leukocyte Typing III (A.J. McMichael, et al, eds.) Oxford University Press, Oxford, (1987) p. 882.

(2) Leukocyte Typing V (S.F. Schlossman, et al, eds.) Oxford University Press, Oxford, (1995) p. 337-341. (3) E.M.

Beckman, et al, (1994). (4) Nature 372: 691-694. R.S. Blumberg, et al, (1995) Immunol Rev 147: 5-29. (5) T. Ito, et al, (1999) J Immunol 163: 1409-1419.

STORAGE CONDITIONS: Store at 2 - 5°C. Freeze/Thawing is not recommended.

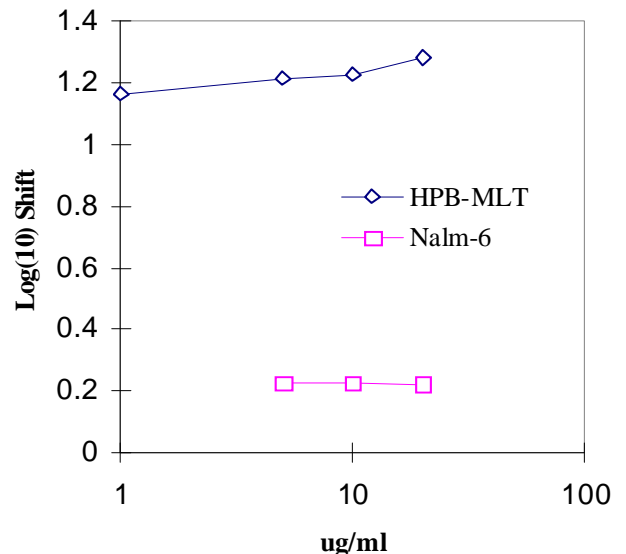
PRODUCT STABILITY: Product should retain activity for at least 12 months after shipping date when stored as recommended. Ship Date: _____

BUFFER: 50 mM Sodium Phosphate pH 7.5, 100 mM Potassium Chloride, 150mM NaCl, 0.5 mg/ml Gentamicin Sulfate (as a preservative).

PRODUCTION: Antibody was Protein A purified from (low FBS containing) tissue culture supernatant. Purity was >95% Immunoglobulin by SDS-PAGE with less than 1% Bovine Immunoglobulin.

PERFORMANCE: Five x 10⁵ cultured **HPB-MLT** per tube were washed and incubated 45 minutes on ice with 80 μ l of anti-CD1a antibody at 5 μ g/ml. Cells were washed twice and incubated with 2^o reagent Goat anti-Mouse IgG/FITC (Catalog #232-011), after which they were washed three times, fixed and analyzed by FACS. Cells stained positive with a mean shift of 1.21 log₁₀ fluorescent units when compared to a Mouse IgG1 negative control (Catalog # 278-010) at a similar concentration.

Binding of anti-CD1a antibody to human cell lines



*This Product is intended for Laboratory Research use only.

Ancell Corporation P.O. Box 87 243 Third Street North Bayport, MN 55003-0087 USA
Phone: Toll free 800-374-9523 or 651-439-0835 Fax: 651-439-1940